



Presents the Third Annual

SPIRE Awards

HONORING

Superior Performance In Real Estate



COMMERCIAL REAL ESTATE AWARDS

February 27, 2014

THE CENTER CLUB

*650 Town Center Drive,
Costa Mesa, California
5:30 pm - 8:30 pm*

Master of Ceremonies

Keynote Speaker



James C. Watson
President and CEO
CT Realty Investors



Robert Brunswick
Chairman and CEO
Buchanan Street Partners

Premier Sponsors



Grand Sponsors



Distinguished Sponsors



Supporting Sponsors



Media Sponsors

AIR Commercial Real Estate Association,
Ambient Studios, Orange County Business Journal,
Parking Concepts, Inc., Bisnow, Globe St.com,
Western Real Estate Business

CREW OC

Established in 1988, CREW Orange County is a professional association of successful Commercial Real Estate Women. A nonprofit organization, CREW OC provides its members with a solid network to strengthen and extend business relationships while developing valuable personal contacts. CREW brings together a diverse group of women that represent several disciplines of commercial real estate including development, property management, brokerage, law, finance, investment, title/escrow, architecture, construction and more.

CREW OC is part of the national CREW Network, which includes 70 major markets and 9,000+ members throughout North America. CREW Network seeks to influence the success of the commercial real estate industry by focusing on fulfilling four key initiatives: business development, leadership development, industry research and career outreach. CREW Network members are known for the quality they bring to the commercial real estate industry. With this large diverse network, our members have the resources to create new and different ways of structuring deals, to focus on the bottom line, and to inspire others to work as a team to get the job done.



CREW OC provides an effective forum for networking, education and philanthropy at both the local and national level. Chapter events include monthly luncheons, networking events, small group member lunches, educational outreach and philanthropic events. Monthly lunch topics focus on new development projects, market forecasts and topics related to professional and personal development. Three signature events include the annual SPIRE Awards, annual Summer Party at the Balboa Yacht Club and Golf Classic. The Summer Party and Golf Classic are major fundraisers for CREW OC's charities WISEPlace and CREW Foundation.

Educational Outreach

CREW College Outreach is an outreach program where CREW members volunteer to mentor university students on networking fundamentals, offer powerful career resources and provide relationship building opportunities for career development. CREW OC has held several successful roundtable events at both California State University Fullerton and University of California, Irvine that were attended by over 50 students. Sarah Gall, a Cal State Fullerton graduate and CREW Foundation Inaugural College Scholarship winner, spoke about her experiences within the CREW Network, sharing how winning the \$10,000 scholarship and paid internship contributed to her landing full-time employment within the commercial real estate industry after graduation.

CREW also participates in CREW Careers, giving disadvantaged high school girls the opportunity to learn from experts in the commercial real estate field. During CREW Careers, the students learn how to develop a real estate asset from the ground up through educational workshops, hands-on demonstrations and team projects. Nonprofit organizations such as Project Access, Girls Inc. and others have participated in this worthwhile outreach program.

WISEplace

CREW OC has supported **WISEplace** Women's Transitional Shelter for the past 17 years. WISEplace offers housing and support services for homeless women who are committed to changing their lives. WISEplace has an 85-year history of caring for local women and was previously the YWCA of South Orange County. By meeting basic needs such as housing, food, clothing, physical and emotional nourishment, as well as vocational and life skills training, WISEplace is one of the few places these women can go to begin again. As a community nonprofit, WISEplace returns 81 percent of donations to saving the lives of homeless women. For more information about WISEplace, please visit www.wiseplace.org.

CREW Foundation

Founded in 1998, CREW Foundation is the philanthropic arm of CREW. In collaboration with CREW Network, CREW Network Foundation implements and supports a Career Outreach Agenda that cultivates our future Network leaders through participation in a continuum of educational outreach, scholarship and mentoring programs. Since 2005, CREW Foundation has awarded over \$700,000 in grants to organizations that assist women and girls to achieve economic self-sufficiency.

Through CREW Foundation, CREW Network members and supporters seek to make a difference both nationally and locally in the lives of women and girls striving to achieve success in their chosen careers, similar to the achievements that members of CREW Network have attained in Commercial Real Estate. CREW Network is one of the first professional groups of its kind to create a national philanthropic effort.

To learn more about becoming a member, please visit CREW Orange County's website, www.crew-oc.org.

2014 CREW OC Board Members



Terri Riker
Lee Ventures Realty, Inc.
President



Angela Kralovec
BlackRock
President Elect



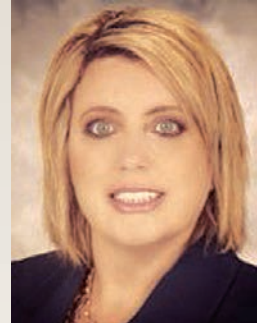
Jennifer Tullius
Tullius Law Group
Treasurer



Diane Fiorelli
Langan Engineering & Environmental Services
Secretary



Tracie Moran
United Paving Co.
Membership Chair



Tina Suihkonen
Old Republic Default Management Services
Sponsorship Chair



Ruth Brajevich
Ware Malcomb
Public Relations Chair



Terri Elia
The Irvine Company
Office Properties
Programs Chair



Marianne Marquez
Willis
CREW Network
Ambassador



Kristi Oates
Squar, Milner, Peterson,
Miranda & Williamson, LLP
Immediate Past President

GRS GROUP
LOCAL KNOWLEDGE | GLOBAL PERSPECTIVE
grs-global.com

Experts at Managing Complexity and Reducing Risk in Commercial Real Estate Transactions

Los Angeles | New York | Chicago | San Francisco | San Diego | Phoenix | Denver | Atlanta | Richmond | Dallas | Frankfurt | London

Rutan & Tucker, LLP
is proud to support the
Spire Awards Celebration and CREW Orange County
in their ongoing efforts to enhance our business community

611 Anton Blvd, Suite 1400 | Costa Mesa | California 92626
Orange County | Palo Alto | www.rutan.com | 714.641.5100

RUTAN
RUTAN & TUCKER, LLP

WHERE LOCAL INSIGHT MEETS GLOBAL ACCESS

From the region's most prominent buildings to its most active tenants, CBRE combines unprecedented local knowledge with unmatched global access to deliver Orange County's leading real estate services platform.

With more than 1600 transactions executed, 63 million square feet managed, \$3.2 billion in loans originated and 1665 appraisals completed in 2013 alone, CBRE is Orange County's undisputed local and global authority on real estate.

For more information on how CBRE can assist you with your real estate needs in Orange County, please contact:

Jeff Moore +1 949 725 8600
Kurt Strasmann +1 714 371 9320

CBRE

cbre.com/orangecounty



3rd Annual SPIRE Awards Judges



Mike Bennett
Senior Vice President
Irvine Company



Karen Eddy
Western Digital Property
Specialist
Crew/Spire Awards-
Co-Chair



Drew Emmel
Managing Partner
Allen Matkins



Therese Hotvedt
President
Burnham USA Equities



Lilian Kuo
Senior Vice President
Shea Properties



Michael LaCour-Little
Director
CSFU Real Estate and
Land Use Institute



Deborah Maietta
Senior Vice President
Sares Regis



Jeff Moore
Senior Managing Director
CBRE



Allen Staff
Market President
Bank of America/
Merrill Lynch



Susan Stoneburner
President
Pacific Design Directions



Jana Turner
Principal/Partner
RETS Associates



Dana White
Vice President Bank of the West
Special Assets Department
Crew/Spire Awards
Co-Chair

CREW Orange County would like to thank this prestigious committee.

Windstream finds new home at Irvine Business Center



Pictured left to right:
Dara Sy, Fred Cooper, Leslie Webb,
Tom Buntin, Nicole Ford, Kunal Mehta,
Dexter Porter and Doug Snelling
of Windstream with Craig Jones of
Partners National

We are pleased to announce that **Windstream** has leased 17,600 SF at **7535 Irvine Center Drive** in **Irvine Business Center**.

Windstream, a FORTUNE 500 and S&P 500 company, is a leading provider of advanced network communications, including cloud computing and managed services, to businesses nationwide. The company also offers broadband, phone and digital TV services to consumers primarily in rural areas.

We extend our appreciation to **Craig Jones** of **Partners National** for his efforts with the lease transaction and thank Windstream for selecting 7535 Irvine Center Drive.



IRVINE COMPANY

150th
ANNIVERSARY



Call 949.720.2550 or visit
IrvineCompanyOffice.com



IRVINE COMPANY
OFFICE PROPERTIES



Celebrating Outstanding Achievement

Congratulations to CREW-OC Spire Award Nominees on your contributions to Commercial Real Estate. We are proud to join in recognizing your accomplishments.

**Bank of America
Merrill Lynch**



"Bank of America Merrill Lynch" is the marketing name for the global banking and global markets businesses of Bank of America Corporation. Lending, derivatives and other commercial banking activities are performed globally by banking affiliates of Bank of America Corporation, including Bank of America, N.A., member FDIC. Securities, strategic advisory, and other investment banking activities are performed globally by investment banking affiliates of Bank of America Corporation ("Investment Banking Affiliates"), including, in the United States, Merrill Lynch, Pierce, Fenner & Smith Incorporated and Merrill Lynch Professional Clearing Corp., both of which are registered as broker-dealers and members of FINRA and SIPC, and, in other jurisdictions, by locally registered entities. Merrill Lynch, Pierce, Fenner & Smith Incorporated and Merrill Lynch Professional Clearing Corp. are registered as futures commission merchants with the CFTC and are members of the NFA. Investment products offered by Investment Banking Affiliates: Are Not FDIC Insured • May Lose Value • Are Not Bank Guaranteed. ©2014 Bank of America Corporation GCB-142-AD | AR159481

New Construction Nominees



Project: LA Fitness

Nominee(s):
Architects Orange
 Ken Smith
Fitness International LLC
 Terry Nemnich
LBA Realty
 Eric Brown
Ficcadenti and Wagoner
 Mark Schroder
Pacific Coast Engineers, Inc./MEP
 Mike Anklam
SDA Architects & Designers
 Andy Wilks
Sepulveda Companies/General Contractors
 Michael Phillips



Project: Civic Center and Park Project for the City of Newport Beach

Nominee(s):
C.W. Driver
 Bruce Curry
Bohlin Cywinski Jackson
 Steven Chaitow



Project: Edwards Lifesciences Parking Garage

Nominee(s):
LPA, Inc.
 Dan Heinfeld, FAIA
Edwards Lifesciences
 Tom Porter
JGingold, LLC
 Jeff Gingold
Choate Parking Consultants
 Rick Choate
Rudolph and Sletten, Inc.
 Thomas Gibbons



Project: Hoag Health Center Cafe

Nominee(s):
JG Construction
 Nan Richardson
 Wayne Desire
Hoag Memorial Hospital Presbyterian & Newport Health Care Partners
 Bill Quiriam
Ware Malcomb
 Tom Myer
 Michael Petersen



Project: UC Irvine Gavin Herbert Eye Institute

Nominee(s):
DES Architects + Engineers
 Craig Ivancovich
Hathaway Dinwiddie
 Rashmi Mehta



Project: Fairfield Inn & Suites - Tustin

Nominee(s):
R.D. Olson Construction
 Bill Wilhelm
 John Ramirez
Gene Fong Associates
 Gene Fong
Fusco Engineering
 Pat Fuscoe



Project: Bill Holmes Tower @ CHOC Children's Hospital

Nominee(s):
Children's Hospital of Orange County
 Waldo Romero
McCarthy Building Companies/General Contractor
 Max Burcham
FKP Architects, Inc./Design Architect & Architect of Record
 Gary Owens, AIA, ACHA, LEED AP
WBSA/Construction Administration & Associate Architect
 Michael Swain
Jacobs/Construction Manager
 Hassan Hallak



Project: Residence Inn - Tustin

Nominee(s):
R.D. Olson Construction
 Bill Wilhelm
 John Ramirez
Gene Fong Associates
 Gene Fong
Fusco Engineering
 Pat Fuscoe

Building Renovations Nominees



Project: Pacific Dental Services

Nominee(s):
LPA, Inc.
 Karen Thomas
 Rick D'Amato



Project: Kulicke & Soffa

Nominee(s):
HKS Architects, Inc.
 Stephanie Fox
Cresa
 Rick Martin
KPRS Construction Services, Inc.
 Randy Workman
Landlord
 Drew Huffman



Project: Park Place

Nominee(s):
LBA Realty
 Karen Penhall
 Tracey Hagadorn

Leasing Nominees



Lease: The Eureka Building

Nominee(s):
Cushman & Wakefield
Shawn Lawrence



Lease: Realogy Corporation

Nominee(s):
DAUM Commercial Real Estate
Services
Danielle Knudson



Lease: Western National Group

Nominee(s):
ORION Property Partners, Inc.
Bob Thagard



Lease: 3100 Susan St.,
Santa Ana

Nominee(s):
CBRE
Dave Desper

Lease: Clean Energy

Nominee(s):
Irvine Company
Mike Hodges
Jeremy Neel
Angela Han
Melissa Gallo
Andrew Medeiros
Kathy Gillett
Stacy Nishioka
Christopher Popma
Mike Bennett
Ben Novak
Steve Case



Lease: Kaleidoscope

Nominee(s):
CBRE
Scott Kaplan
Erik Westedt
Justin McMahon



KPRS Construction: Building Southern California. People with vision changing the face of the industry. We lead. We build. We inspire. Visit our site and learn more at www.kprsinc.com

Sales Nominees



Project: The Eureka Bldg., Irvine

Nominee(s):
Cushman & Wakefield
Shawn Lawrence



Project: 5901 Bolsa Ave., H.B.

Nominee(s):
Cushman & Wakefield
Rick Ellison
Jeff Chiate
Randy Ellison
Seller's Brokers



Project: Irvine Oaks Executive Park

Nominee(s):
Cushman & Wakefield
Jeffrey Cole
Ed Hernandez



Project: 5901 Bolsa Ave., H.B.

Nominee(s):
Voit Real Estate Services
Michael Hartel
Buyer's Brokers

Project: 12131 Western Ave., Garden Grove

Nominee(s):
Voit Real Estate Services
Michael Hartel



Project: Spec Development @ 2850 Orbiter St., in Brea

Nominee(s):
CBRE
Ben Seybold
Sean Ward



Sheppard Mullin

is proud to sponsor the

Commercial Real Estate Women, Orange County (CREW-OC)

3rd Annual SPIRE, Commercial Real Estate Awards

Our experience:

- Banking institutions and real property secured lenders
- Structuring complex financing transactions
- Tax exempt financing
- Affordable housing financing
- Loan workouts and foreclosures





Strengthen your business with the power of ours.

Your business, big or small, needs solutions that are as unique as the Orange County landscape. That's where Cox Business excels. From the Fortune 500™ to your sole proprietorship, every customer receives the same level of dedication and commitment. Our voice, data and business TV solutions are, scalable, reliable, and tailored to fit your needs. And while we are local, doing business where you do business, we have the power to reach nationwide. **Cox Knows Business.**

Let's Talk.
Call today to ask about our latest promotions!
(866) 906-9738
coxbusiness.com

Services not available in all areas. Other restrictions apply. ©2014 Cox Communications, Inc. All rights reserved.



Lending Nominees



Loan: Tustin Shopping Center @ Jamboree and Irvine Blvd.

Nominee(s):
Johnson Capital
Rich Caterina



Loan: Irvine Spectrum Courtyard by Marriott

Nominee(s):
Westcap Corp
Steve Bridges
R.D. Olson Development
Bob Olson



Loan: Mesa Management Portfolio

Nominee(s):
Beech Street Capital
Kristen Croxton
Greg Reed
AEGON USA Realty Advisors, LLC
Matt Palmer



Loan: Tustin Centre I and II in Santa Ana

Nominee(s):
CBRE, Inc.
Val Achtemeier

Loan: Irvine Campus Housing Authority @ UC Irvine

Nominee(s):
Housing Capital Company (a division of U.S. Bank)
Russ Wakeham
Peter Edberg



Loan: Hunter Food, Inc.

Nominee(s):
Bank of America Merrill Lynch
Patrice Kiiru
Jay Hunter



Industrial Income Trust (IIT) would like to thank the following brokers for their outstanding contribution to helping IIT lease and grow our southern California industrial portfolio. Thanks to your knowledge and expertise, IIT's southern California industrial portfolio has grown to approximately 6.7 million square feet (57.2 million square feet nationally). Additionally, you have helped us lease over 2.2 million square feet in southern California, keeping IIT's southern California Operating Portfolio 100% leased (95% nationally) and our Total Portfolio in southern California (including development) 90% leased (93% nationally). Thank you all for your longstanding support and exceptional performance.

INDUSTRIAL INCOME TRUST
INDUSTRIALINCOME.COM
4675 MACARTHUR COURT, SUITE 625
NEWPORT BEACH, CALIFORNIA 92660
949.892.4900

 ADAM PASTOR Eastdil Secured	 STEVE SILK Eastdil Secured	 JAY BORZI Eastdil Secured	 JEFF READ Newmark Grubb Knight Frank	 GREG OSBORNE Newmark Grubb Knight Frank	 JOHN SCHUMACHER CBRE	 BRET QUINLAN CBRE
 DAN DE LA PAZ CBRE	 DAVID CONSANI CBRE	 JIM KOENIG CBRE	 DARLA LONGO CBRE	 JOEY SUGAR CBRE	 CLYDE STAUFF Colliers International	 STEVE SCHLOEMER Colliers International
 JEFF SMITH Lee & Associates	 RYAN LAL Lee & Associates	 STEVE BELLITTI Colliers International	 TOM TAYLOR Colliers International	 ANDREW HERRON The Saywitz company	 MATT DIERCKMAN CBRE	 JEFF CHIATE Cushman & Wakefield
 JEFF COLE Cushman & Wakefield	 PHIL LOMBARDO Cushman & Wakefield	 TY NEWLAND Cushman & Wakefield	 CHUCK BELDEN Cushman & Wakefield	 BARRY HILL JLL	 ZAC SAROWSKI JLL	 JEFF STEPHENS CBRE
 ROSS FIPPINGER Colliers International	 JOHN PRIVETT CBRE	 BRIAN ZURAWSKI Cushman & Wakefield	 MARK ZORN Colliers International	 DAVE HASBROUCK Cushman & Wakefield	 TIM PIMENTEL Cushman & Wakefield	

Lending Nominees



Loan: The Crown Residence Apartment Community

Nominee(s):
US Bank
 John Kuykendall
BlackRock
 Stephen Corrigan
Mill Creek Residential Trust
 Charles Brindell, Jr.



Loan: Hyatt Place Anaheim Resort

Nominee(s):
Bank of America Merrill Lynch
 Dean Parsons
 Marilyn Smith
 Heather Barbour

Tenant Improvement Nominees

Project: Kareo

Nominee(s):
LPA, Inc.
 Karen Thomas
 Rick D'Amato
 Terri Lee
Kareo
 Dan Rodrigues
 Jason Gardner
LBA Realty
 Eric Brown
Turelk, Inc.
 Toni Scarpinato
Newmark Grubb Knight Frank
 Jeff Molitor



Project: St. Joseph Health

Nominee(s):
Snyder Langston
 John Gunther
LBA Realty
 Donna Clark



Project: Winspire

Nominee(s):
SAA
 Tina Weise
 Betsy Iverson

Project: Gensler's Offices

Nominee(s):
Gensler
 James Young
Irvine Company
 Rick Wandrocke
Systems Source
 Rosemarie Smith
Inner Space Constructors
 Keith Taylor



You inSPIRE us.

Congratulations to all of the SPIRE Awards winners and nominees. We celebrate your accomplishments and commitment to superior performance in real estate.

Your Vision.
 Your Culture.
 Your Success.
 Your Space.

To find out more about our properties, visit IrvineCompanyOffice.com or call 949.720.2550

IRVINE COMPANY
OFFICE PROPERTIES

CoSTAR GROUP

SEE YOUR COMMERCIAL REAL ESTATE PORTFOLIO LIKE NEVER BEFORE.

Go from macro to the most granular detail, across any market or set of properties with a level of standardization only CoStar can provide.

To learn more, visit newcostar.com or contact James Watson.

18201 Von Karman Ave., Suite 550, Irvine, CA 92612
 Tel: 888.226.8524 | jwatson@costar.com



Great Solutions for Companies That:

- Need 5,000 sq. ft. or less of permanent or flexible office space
- Need space urgently
- Are unsure of future space or term needs
- Need a short term swing or project space
- Want a turn-key, zero capex, flexible solution

With 70 locations, Premier Business Centers is a leading provider of executive offices, workspaces, meeting facilities and virtual offices in the U.S.



New clients can get up to
**3 MONTHS
FREE RENT**
on a full time office agreement
of at least 12 months.*



INQUIRE NOW
1.877.697.8483
PBCENTERS.COM



Places to Work

- Prime business addresses
- Full & Part time offices
- Shared Workspace

Virtual Business Presence

- Phone answering and mail services
- Dedicated support teams
- Access to 70 prime locations

Places to Meet

- Conference rooms
- Meeting rooms
- Training rooms

Work Whenever, Wherever, However... with Premier.

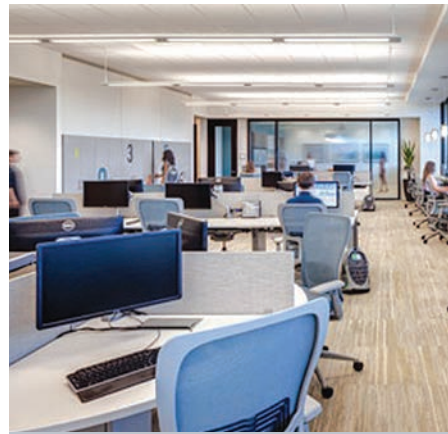


California • Florida • Ohio • Texas • Washington

Los Angeles County + San Bernardino County + Orange County + Riverside County
San Diego County + San Francisco County + Alameda County + Santa Clara County
Dallas + Seattle + Cincinnati + Aventura

*Some restrictions apply.

Tenant Improvement Nominees



Project: Goodman Birtcher North America

Nominee(s):
Coastal Pacific Construction Inc.
Gary Mason
Kevin Eddy

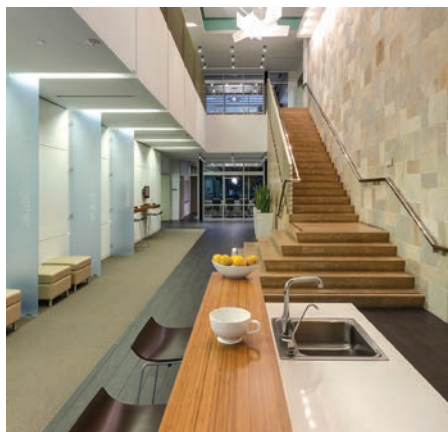


Project: Goodman Birtcher North America

Nominee(s):
H. Hendy Associates
Heidi Hendy
Felicia Hyde

Project: Thales

Nominee(s):
Ware Malcomb
Anita Makwana
Turelk, Inc.
Craig Powell
TK1SC
Larry Sun
Jones Lang LaSalle
Brian Prock
Shaw Contract Group
Brad Calehuff
Tangram
Kimberly Carillo



Project: Stantec Consulting

Nominee(s):
LPA, Inc
Terri Lee
Natalie Zweig



Project: First American Title

Nominee(s):
Thorpe Construction
Mark Thorpe
Catherine Falco
Bob Schlueter
H.Hendy Associates
Susan Dwyer
Corrie Dolman
First American Title Company
John Hufferd

CONGRATULATIONS TO ALL AWARD WINNERS

REIMAGINED.
REDEVELOPED.
RENEWED.



parkplaceirvine.com

PARK PLACE

Become Inspired.

Cresa is Proud to Support CREW-OC and the 3RD Annual Spire Awards

Congratulations to all of the nominees!

To learn more about how we can provide our Tenant's Advantage perspective on your real estate, please visit us at cresa.com



610 NEWPORT CENTER DRIVE, SUITE 500 ■ NEWPORT BEACH, CA 92660 ■ 949.706.6600 ■ CRESA.COM

Philanthropy Nominees



Nominee(s):
Steve Coyne
 Coyne Development Corporation
Board Chair Goodwill of Orange County, Goodwill Fitness Center, Shopgoodwill.com, Enduring Independence



Nominee(s):
Sharon Kline
 CB Richard Ellis
KidWorks – Board Member



Nominee(s):
Curtis Ellmore
 Jones Lang LaSalle
Hoag Hospital Foundation – 552 Club Board member, Hoag Hospital Irvine Advisory Committee



Nominee(s):
Melissa King
Jason King
 DPR Construction
Human Options – Second Step Transitional Housing Renovations

Nominee(s):
Karl Kreutziger
 Driver SPG
Midnight Mission, Dave Anderson Memorial Golf Tourney, Project Hope Alliance, Special Olympics Summer Games, Mary's Kitchen; Big Brothers & Big Sisters of O.C.; OC Conservation Corps; Kristie's Foundation; Women Helping Women American Heart Association Boys and Girls Club of Anaheim Royal Family Kids



Nominee(s):
Jean Tietgen
 Evergreen Realty & Associates, Inc.
Habitat for Humanity – O.C., Leader's Build Day Committee



LEE & ASSOCIATES®
SALUTES THEIR 2013
TOP PRODUCERS IN
ORANGE COUNTY

Lee & Associates opened its doors in 1979 and has grown to over 49 offices in major markets across the country. With the simple idea that successful agents would want ownership in their office, Lee & Associates is proud to provide Orange County with superior commercial real estate services and long-term stability.



GARY MCADELL
 Office



JOHN COLLINS
 Office/Industrial



RYAN SWANSON
 Industrial



BRIAN GARBUTT
 Industrial



TOM GRANT
 Industrial/Investment



CLIF FINCHER
 Industrial



JIM SNYDER
 Industrial/Investment



PHIL COHEN
 Office/Industrial



DAVE NEWTON
 Industrial



CURT STALDER
 Industrial/Investment



SEAN AHERN
 Office/Industrial



MARK JERUE
 Industrial



CRAIG FITTERER
 Industrial



DAVID WILLIAMS
 Industrial/Investment



JEFF GAHAGAN
 Industrial/Investment



LEE & ASSOCIATES - NEWPORT BEACH, INC.
 100 Bayview Circle, Suite 600
 Newport Beach, CA 92660
 T: 949.724.1000 | F: 949.862.9048

LEE & ASSOCIATES - IRVINE, INC.
 111 Pacifica, Suite 310
 Irvine, CA 92618
 T: 949.727.1200 | F: 949.727.1299

LEE & ASSOCIATES - ORANGE
 1004 W. Taft, Suite 150
 Orange, CA 92865
 T: 714.647.9100 | F: 714.543.5285

Philanthropy Nominees



Nominee(s):
Teresa Joanning Farrell
Law Offices
Second Harvest Food Bank of O.C.
– Food Distribution Center
Treasurer of the Board
Executive Committee Member
The Harvesters Member



Nominee(s):
Rebecca Hall
Idea Hall
O.C. Council of the Boy Scouts of America – Board of Trustee,
CHOC Follies cast member,
Goodwill of O.C.,
Alzheimer's Association



Nominee(s):
Sal Provenza
Colliers
Building Block Foundation Chairman
Bob O'Neill
Alliance Commercial Partners
Kristina Lewison
Colony Realty Partners
Brian Airth
Interior Office Solution
Ed Pitula
McShane Construction Company



Nominee(s):
Jeff Shepard
Child Abuse Prevention Center Board
Make A Wish Foundation Board
Working Wardrobes Board

Nominee(s):
Vijay Pai
Gloria Lee
Andrew Lamming
Rutan & Tucker, LLP
Alzheimer's Association of O.C.



Nominee(s):
Mark Harryman
Unire Real Estate Group, Inc.
Families Forward Board President
8 Thomas Program Ctr. Project
Robert Lambert
Cushman & Wakefield
Families Forward Co-Chair of the Fund Development Committee
8 Thomas Program Ctr. Project



WHERE Innovation MEETS Integration



EQUUS | Irvine | 99,864 sq ft

Caliber

CONSTRUCTION, INC.

Caliber Construction Inc.
240 North Orange Avenue | Brea CA 92821
714-255-2700 | sales@caliberconstructioninc.com
caliberconstructioninc.com

Women in CRE Nominees



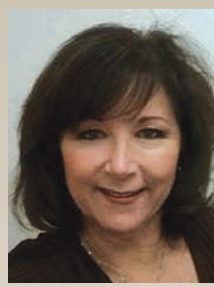
Nominee:
Lynn Galuppo
cox castle &
nicholson



Nominee:
Angela Todd
DMG Corporate



Nominee:
Sarah Carr
McCarthy Building
Companies



Nominee:
Kristen Holst
CVS Realty Co.



Nominee:
Ruth Brajevich
Ware Malcomb



Nominee:
Karen Williamson
Union Bank



Nominee:
Massy Farzine
ESDI, Inc.



Nominee:
Danielle Knudson
DAUM Commercial
Real Estate
Services



Nominee:
Valerie Ioriatti
Wells Fargo



Nominee:
Jo-E Immel
Snyder Langston



Nominee:
Sharon Kline
CBRE



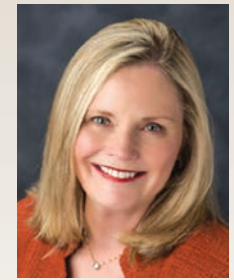
Nominee:
Lydia Shen
Cornerstone Real
Estate Advisers



Nominee:
Sally French-Tyler
First American Title



Nominee:
**Alexandra (Ali)
Hawthorne**
ORION Property
Partners, Inc.



Nominee:
Cynthia Bell
Law Office of
Cynthia Bell
Cynthia Bell &
Associates

**WILLIS WOULD LIKE TO
CONGRATULATE ALL OF THE
SPIRE AWARD NOMINEES**

We are proud to give our support to this event representing some of our local community's best and brightest talent in commercial real estate.

www.willis.com

(949) 885-1200

Throughout North America, Willis has over 800 Real Estate Clients, annually placing over \$1.3 billion in premiums into the insurance capital marketplace.

IRVINE | LOS ANGELES | SAN DIEGO

Willis



YOUR BUSINESS DESERVES

a higher level of expertise at every level.

When you need financing, U.S. Bank's Commercial Real Estate Division is ready with the industry's best line-up of innovative products and services. All backed by the stability of one of America's strongest banks. U.S. Bank. It's not just what a successful company requires, it's what you deserve.

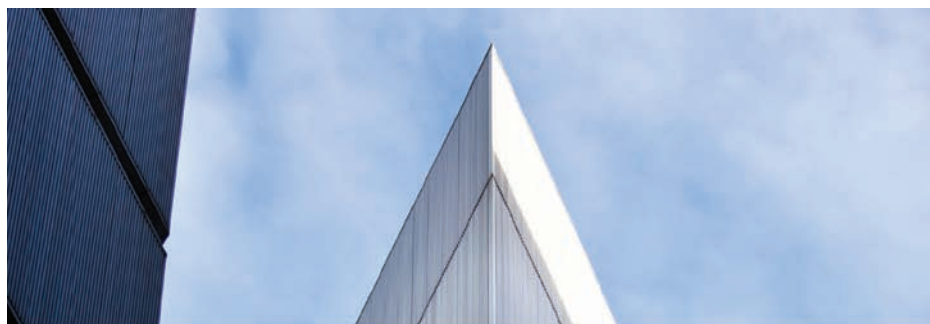
U.S. Bank is proud to sponsor the SPIRE CREW Awards... recognizing superior performance in Orange County real estate.



All of us serving you®

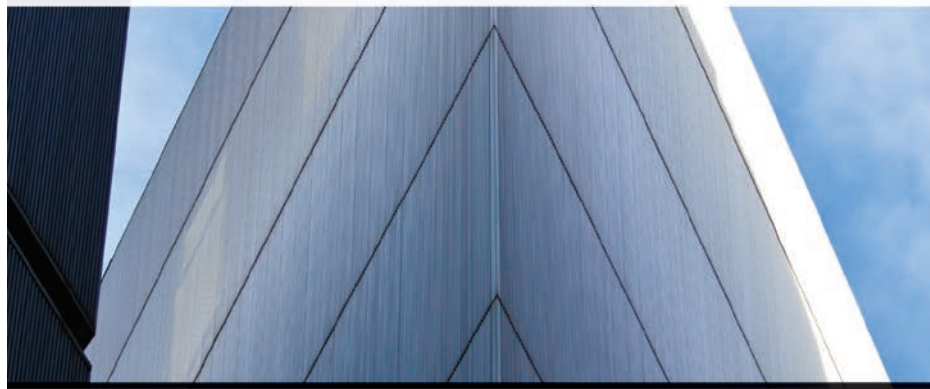
usbank.com

Member FDIC.
©2014 U.S. Bank. 7081



Congratulations to the SPIRE Award Nominees and Winners

A superior way to buy and sell real estate
www.auction.com/commercial



auCTION.com The Nation's Leading Online Real Estate Marketplace.



"We wanted our traditions of precision and quality translated in our renovation, so we chose Caliber Construction to create our 99,000 sq. ft. Los Angeles Technical Center...and Caliber stepped up and made it happen when extra effort was needed." Michael Gordon, Amada North America, Inc.

Quality in the End Depends on the Start Commercial Construction Cost Estimating

by Doug Bassett and Jim Roy, Caliber Construction, Inc.

Daniel Pink, one of the top 50 business thinkers today and a NY Times bestselling author, explores the top skills needed in today's complex business environment. Among them is the skill of proactively **finding problems** instead of the more widespread practice of reactively responding to problems. Paradoxically, we've discovered this to be the underpinning of an ongoing method that ensures highly successful commercial construction outcomes.

When and What Change Good to Great

When a long-time architectural partner remarked about how rare and valuable precise cost estimates are, we decided to reverse engineer our unique process. It became clear that the "when" and the "what" we use are the bridges that carry cost estimates from good to great.

We've learned that the questions you ask and when you ask them are not simple matters of company style or preference. In 22 years, the patterns have clearly emerged. Our consistently better construction outcomes are borne out of asking the harder questions during the early stages when the companies may just be getting acquainted and when it might feel safer to be less challenging.

Better construction outcomes emerge from knowing when to lift up and look under an assumption, when to dig around a specification (because it's where hazards hide), and knowing – then raising up – alternatives in the less obvious pockets where cost savings are often poised to be discovered by those who know how to look. Instead of asking when an issue threatens the project, especially schedule, a good cost estimator puts the harder, pause-causing questions out there in the concept phase. Pink shares that the premium is found in the shift to finding problems – for us, it is when our digging exposes something the project owner doesn't even see coming or may be wrong about where they expect it to show up.

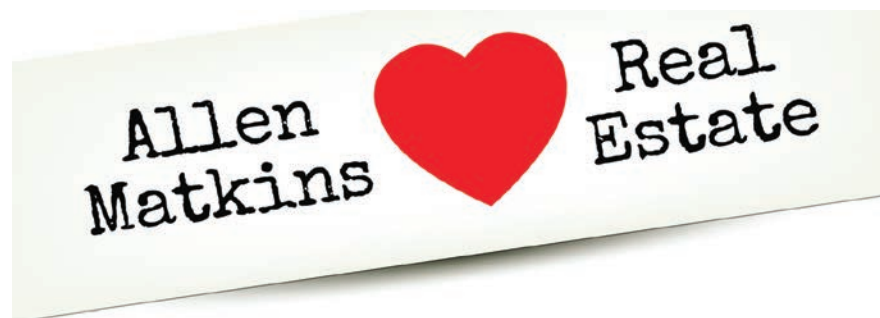
Sometimes It's Saving Clients from Themselves

When issues are settled early and potential threats have been mitigated, our team is free to direct their energy and focus on a superior result because the added coordination of procurement, design, resources and project timing aren't a distraction. We're ensuring the questions that could have been asked – and handled – have been managed. Intersecting the right questions at the right time is our way of vaporizing surprises, eliminating confusion and lighting the path for the tenant and property owner to move as quickly as a tenant improvement project's aggressive timeline demands.

In the end, the destination for our cost estimating isn't necessarily a project win. Cost estimating is the first step that takes a project from concept to reality for the project owner. It is a way of saving our clients from their own mistakes at times. And, taking the risk to ask the hard questions early is what keeps the project progressing as it should so that the final outcome is what was envisioned in the beginning.

Doug Bassett and Jim Roy

Doug Bassett and Jim Roy founded Caliber Construction, Inc. with a singular intent – become masters of commercial tenant improvements in Southern California. Twenty-two years later they work exclusively with partners that share that promise for precision, continue to choose the good of the property before profit and demonstrate mastery in development after development. Learn more about Caliber Construction, Inc. at www.caliberconstructioninc.com or call Doug Bassett or Jim Roy at 714.255.2700.



Allen Matkins congratulates all of the 3rd Annual SPIRE Awards' nominees.

We provide a full range of legal services to the real estate industry. We assist clients with their development, finance, capital markets, acquisition, leasing, joint venture, litigation, construction, bankruptcy, environmental, corporate, tax planning, securities and employment matters.

www.allenmatkins.com

Allen Matkins
CHALLENGE. OPPORTUNITY. SUCCESS.

CREW California to Host Top Commercial Real Estate Professionals at Technology Conference April 24-26

Commercial real estate professionals from across the state will gather April 24-26 in San Francisco for a new conference focused on how technology is changing the landscape of commercial real estate as a whole.

The conference, hosted by CREW California, offers a series of keynote speakers who will delve into the issues, the impact and the growth opportunities that technology presents in commercial real estate today.

"Technology is a huge influencer in the way all industries are doing business," says Dana White, Vice President for Bank of the West and a spokesperson for CREW California. "By arming commercial real estate professionals with the right tools and information, we will all be better able to understand how to leverage this momentum to better serve our clients."

CREW California, a chapter of the national Commercial Real Estate Women Network, is a leading business networking organization that aims to advance the accomplishments of professionals within the commercial real estate industry. Representing nearly every discipline in the industry, CREW is dedicated to influencing the success of its members through business development, leadership development, industry research and career outreach.

"Through its innovative conferences and business networking opportunities, CREW California has repeatedly demonstrated its ability to influence the success of its members," notes White. "It's important to us that we not only equip members of our industry with the tools to thrive, but also provide them with the information needed to achieve longevity within the ever-changing business landscape."

This year's conference will tackle the subject of technology and identify the latest trends that will help attendees take their businesses to the next level. Conference attendees will have the opportunity to hear from a variety of dynamic speakers, and attend multiple networking events.

Keynote speakers for the CREW California conference will include industry leaders providing details on the latest in technology and trends. Featured speakers for this event include Eric Paulson, Executive Vice President and General Manager for the Commercial Division of Auction.com; Fred Saint, Senior Vice President for LoopNet; and Chris Coleman of Dropbox; among others.

In addition, attendees will benefit from the opportunity to expand their networks and expose their businesses to new industry contacts through dine-arounds, a networking breakfast, and a cocktail reception, among other events.

Conference guests can also visit the on-site tech booth, through which attendees can access the latest tips and trends in marketing their business, from social media to websites to email campaigns.

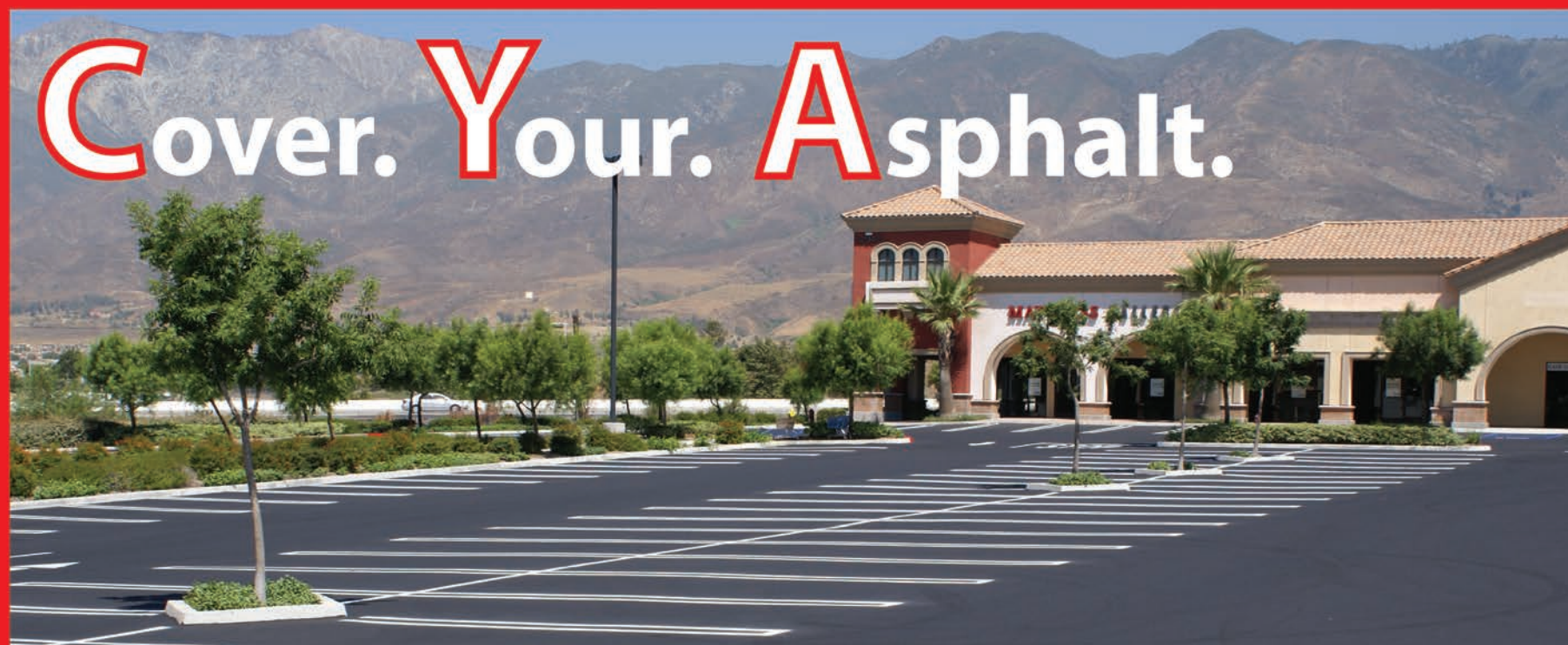
The CREW California conference will take place on April 24-26 at the Hyatt Regency Hotel in San Francisco. For more information about this event or to register, visit www.crewca.org.

The Value of Your CREW Network Membership

CREW Network is committed to leading to change. We accomplish this by strategically building our network to provide members the strongest business connections available, providing targeted training to create strong industry leaders, developing critical tools to support strong chapters, facilitating industry advancement by conducting important industry research, and creating a strong CREW Network brand to promote the professional excellence of CREW Network members.

- ▶ **Superior business development networking opportunities** – CREW Network is one of a select group of commercial real estate associations that are multi-disciplined
- ▶ The ONLY association dedicated to ***influencing the success of the commercial real estate industry by advancing the achievements of women***
- ▶ **Leadership training and mentoring opportunities** with professionals from within and outside your industry discipline
- ▶ **Dedicated to conducting and publishing industry research studies** that support women in commercial real estate
- ▶ **Integrated technology** that ***supports members, chapters and partners*** in seeking out experts in the commercial real estate industry throughout North America
- ▶ **Complimentary Leadership Development webinars** presented by tenured experts in the industry and at leading universities
- ▶ **Exclusive access to CREWbiz™ proprietary business networking tool**, which provides members the opportunity to ***promote their expertise to 8,000 CREW Network members across North America***
- ▶ **Branding and promotion** of CREW Network organization and members in industry journals and publications including the ***Wall Street Journal*** to ***increase organization's support and create awareness of CREW chapters and members***
- ▶ **Best practices** of chapters and members through member-to-member networking, board hosted calls and ***chapter playbooks*** addressing sponsorship, membership, career outreach programs and chapter administration

At CREW Network, we exist to influence the success of the commercial real estate industry by advancing the achievements of women.



Do it right the first time

Tel 714-739-2200

info@united-paving.com

 UNITED-PAVING.COM

 CONGRATULATIONS to all of our *CREW-OC SPIRE Awards Nominees!*