



Presents the Fourth Annual

SPIRE Awards

HONORING

Superior Performance In Real Estate



CREAWARD
ORANGE COUNTY

COMMERCIAL REAL ESTATE AWARDS

February 26, 2015

THE CENTER CLUB

650 Town Center Drive,
Costa Mesa, California
5:15 pm - 8:30 pm



Master of Ceremonies
Steven L. Craig
President/CEO
Craig Realty Group



Keynote Speaker
Janet Nguyen
State Senator
State of California

Premier Sponsors



Grand Sponsors



Distinguished Sponsors



Supporting Sponsors

- CCA Architects
- CRESA Orange County
- HMWC CPA
- IA Interior Architects
- LBA Realty
- RD Olson
- Shea Properties
- Wells Fargo



The "Stars of Orange County"

Congratulations to NAI Capital's Top Brokers in 2014



David Knowlton
Sr. Vice President



Brian Bethea
Sr. Vice President



Jerry Giglio
Sr. Vice President



John Bosko
Sr. Vice President



Tom Nguyen
Exec. Vice President



John Manion
Sr. Vice President

NAI Capital Orange County
1920 Main Street, Suite 100
Irvine, California 92614
949 854 6600
naicapital.com

Realizing Potential.
Delivering Results.

Orange County's Premier TENANT IMPROVEMENT COMPANY





Commercial office
Space planning

Construction documents
Interior design

17780 Fitch Suite 150 Irvine CA 92614 spaces-oc.com | 949.724.1499

**We're moving to a new,
location March 30th :**

3150 BRISTOL STREET
SUITE 205
COSTA MESA CA 92626





CREW-OC Board Members 2015



Angela Kralovec
President



Francesca Braniger
President Elect



Terri Riker
Past President



Kristen Croxton
Treasurer



Diane Fiorelli
Secretary



Tracie Moran
Director - Membership



Jennifer Bojorquez
Director - Programs



Jennifer Quader
*Director - PR, Marketing,
Communications*



Suzanne Skov
Director - Sponsorship

TRANSFORMING REAL ESTATE INTO REAL ADVANTAGE

For every client, advantage is delivering the broadest, deepest reach and resources any real estate company offers.

Transforming property into prosperity, square feet into strong portfolios, scale into global strength. All in service of exceptional outcomes that build real business advantage. Let us put our actionable perspectives, global reach and powerful connections to work for your business.



About CREW-Orange County

Established in 1988, Commercial Real Estate Women, Orange County ("CREW-Orange County") is a professional association of successful women and men working in the field of commercial real estate. A nonprofit organization, CREW-Orange County is focused on advancing the success of women in commercial real estate. It provides its members with a solid network to strengthen and extend business relationships while developing valuable personal contacts. CREW brings together a diverse group of women and men that represent several disciplines of commercial real estate including development, property management, brokerage, law, finance, investment, title/escrow, architecture, construction and more.

CREW-Orange County is part of the national CREW Network, which includes 70 major markets and 9,000+ members throughout North America. CREW



Network seeks to influence the success of the commercial real estate industry by focusing on fulfilling four key initiatives: business development, leadership development, industry research and career outreach. CREW Network members are known for the quality they bring to the commercial real estate industry. With this large diverse network, CREW members have the resources to create new and different ways of structuring deals, to focus on the bottom line, and to inspire others to work as a team to get the job done.

CREW-Orange County provides an effective forum for networking, education, and philanthropy at both the local and national level. Chapter events include seven to eight luncheons each year, networking events, educational outreach and philanthropic events, as well as members-only professional/leadership development and small group member lunches. Lunch topics focus on new development projects, market forecasts and relevant commercial real estate topics. There are two signature

events - the **Superior Performance In Real Estate** ("SPIRE") Awards and the Annual Summer Party at the Balboa Yacht Club. The Summer Party is a major fundraiser for CREW-Orange County's charities WISEPlace and CREW Foundation.

Levels of Membership

Regular Member – Membership in CREW-Orange County is limited to professionals whose major source of income is derived from commercial real estate. Membership requires five years of recent experience, and active involvement in a decision or deal-making capacity in a qualified commercial real estate field. Applicants must provide two professional references and be sponsored by two regular CREW members. Attendance at two meetings is recommended.

Associate Member – Individuals with less than five years of recent experience, but at least one year of experience in commercial real estate can join as an associate member. Associate members have all the benefits of regular membership, except that an associate member cannot hold a board position or chair a committee.

Affiliate Member – An affiliate member is an individual who is not employed in a qualified commercial real estate field but provides goods or services relating to commercial real estate. All other requirements of membership must generally be satisfied and in addition, the affiliate sponsor member (or their employer) must sponsor at a level set annually by the CREW-Orange County Board. To apply, both a sponsorship registration and a membership application must be completed. Please visit the CREW sponsorship page for more information.

Emerging Leaders Scholarship – Continuing Emerging Leaders Committee Members who have been active on the Emerging Leaders Committee the previous year are eligible for the Emerging Leaders Scholarship, which may be applied to annual membership dues. Attendance at monthly Emerging Leaders Committee meetings and active participation in Emerging Leaders events planning are minimum requirements for scholarship eligibility and recipients will be determined on a case-by-case basis.

Hughes Marino congratulates

David Marino

on his SPIRE Award nomination for Superior Performance in Commercial Real Estate Leasing.

Hughes Marino Co-Founder and Executive Vice President David Marino is a true leader in our industry, and we are thrilled to see him recognized for his work. Over the past 27 years, David has represented countless Southern California companies in their lease and purchase transactions. It takes vision, strategic planning, and a total command of the process from inception to occupancy, and no one does it better than David.

Congratulations, David!
You are an inspiration to the entire Hughes Marino team.

Hughes Marino
Because Where You Do Business Matters™





bar raising

Bank of America Merrill Lynch is proud to join in honoring the outstanding efforts of CREW-OC Spire Award Nominees.

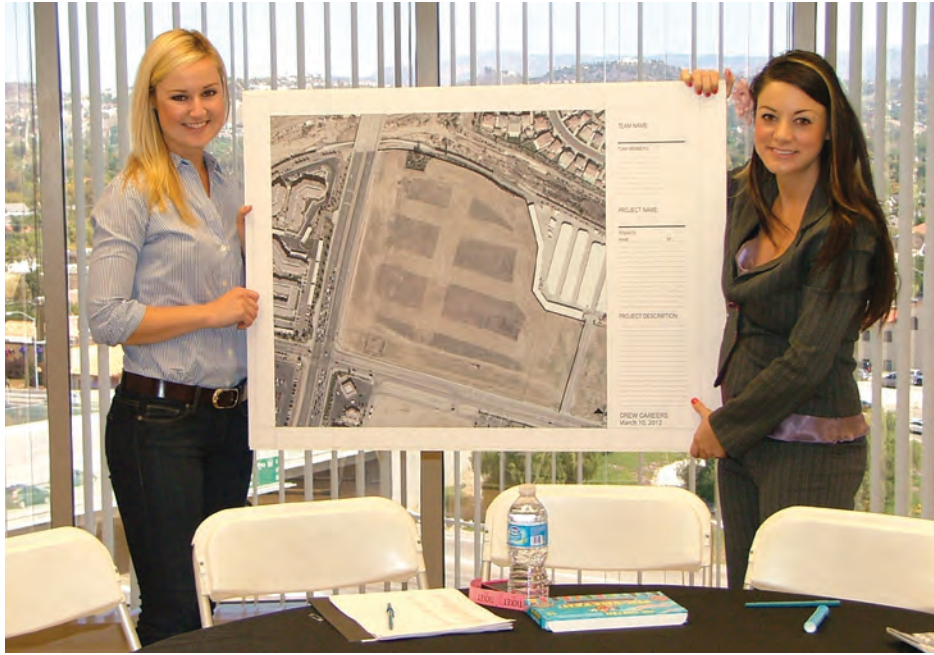
Visit baml.com

Bank of America
Merrill Lynch

Bank of America
Merrill Lynch

The power of global connections™

"Bank of America Merrill Lynch" is the marketing name for the global banking and global markets businesses of Bank of America Corporation. Lending, derivatives, and other commercial banking activities are performed globally by banking affiliates of Bank of America Corporation, including Bank of America, N.A., member FDIC. Securities, strategic advisory, and other investment banking activities are performed globally by investment banking affiliates of Bank of America Corporation ("Investment Banking Affiliates"), including, in the United States, Merrill Lynch, Pierce, Fenner & Smith Incorporated and Merrill Lynch Professional Clearing Corp., both of which are registered broker-dealers and members of SIPC, and, in other jurisdictions, by locally registered entities. Merrill Lynch, Pierce, Fenner & Smith Incorporated and Merrill Lynch Professional Clearing Corp. are registered as futures commission merchants with the CFTC and are members of the NFA. Investment products offered by Investment Banking Affiliates: Are Not FDIC Insured • May Lose Value • Are Not Bank Guaranteed. THE POWER OF GLOBAL CONNECTIONS is a trademark of Bank of America Corporation, registered in the U.S. Patent and Trademark Office. ©2015 Bank of America Corporation | GCB-146-AD | AR3DPDVS



CREW-OC Hosts Career Day for At-Risk Girls

*CREW-Orange County and CREW Careers
build opportunities*

Commercial Real Estate Women-Orange County ("CREW-Orange County") will host a one-day program for at-risk high school girls to provide exposure to commercial real estate and to highlight career opportunities within the field. This full-day event will be held Saturday, April 25 at the Ford Orange County Corporate Headquarters in Irvine.

Learning About Careers in Commercial Real Estate

CREW Careers is an informative and hands-on commercial real estate curriculum which alternates between a series of lectures and interactive workshops.

Throughout the day, young women will receive a rotating series of presentations touching on careers in commercial real estate including site acquisition, design, construction, leasing, legal, property management, finance and asset disposition. Using information learned in the presentations, and guided by real estate professionals, teams of girls will construct their own mock commercial retail site, lease it and calculate its value.

In previous years, model buildings were laid out on a dirt site plan with trees, buildings, drive isles, parking spots, signage and more. The program emphasizes the variety of career options related to every aspect of real estate, and what background is needed for each career.

Opportunities

"The event opens girls' eyes to the career opportunities available in commercial real estate," says Angela Kralovec, current president of CREW-Orange County. "Many live in apartments, shop at retail, see office and industrial buildings around town, but never think twice about what it took for these buildings to be there. This program lets them know about the multitude of job opportunities available in the many niches of this field."

The day will conclude with presentations of the model commercial centers from each of the teams, ending with an awards ceremony for the best plan and participation giveaways for the girls.

Sponsors

CREW-Orange County members and corporate sponsors are being sought for this year's event. We are seeking donations of time, giveaways and scholarship money to mentor female high school students. The cost to sponsor one high school girl to attend this event is \$60.

CREW-Orange County

CREW-Orange County is a member organization of the Commercial Real Estate Women ("CREW") Network and has been serving Orange County real estate professionals since 1988. CREW-Orange County is a nonprofit organization established to promote and sponsor educational and professional activities for its members in the field of commercial real estate. For more information about CREW-Orange County, please visit www.crew-oc.org. You can also find CREW-Orange County on Facebook and LinkedIn.

Hughes Marino congratulates

Shay Hughes

on her SPIRE Award
nomination for Superior
Performance by a Woman
in Commercial Real Estate.

Hughes Marino COO Shay Hughes has been instrumental in our success as a company, and we are thrilled to see her commended for her work. From internal operations to business development, marketing strategy to company culture, Shay has made a positive impact on literally every aspect of the Hughes Marino organization.

Congratulations, Shay!
**You are an inspiration to the
entire Hughes Marino team.**

Hughes Marino
Because Where You Do Business Matters™





Strengthen your business with the power of ours.

Your business, big or small, needs solutions that are as unique as the Orange County landscape. That's where Cox Business excels. From the Fortune 500™ to your sole proprietorship, every customer receives the same level of dedication and commitment. Our voice, data and business TV solutions are scalable, reliable, and tailored to fit your needs. And while we are local, doing business where you do business, we have the power to reach nationwide. **Cox Knows Business.**

Let's Talk.
Call today to ask about our latest promotions!

(844) 203-0027
coxbusiness.com

Services not available in all areas. Other restrictions apply. ©2015 Cox Communications, Inc. All rights reserved.

COX
Business®

CREW-OC Raises Over \$10,000 for WISEPlace and CREW Network Foundation at Annual Industry Summer Party

Commercial Real Estate Women-Orange County ("CREW-Orange County") held its annual Summer Party on Aug. 19, 2014 at the waterfront Balboa Yacht Club in Corona del Mar, Calif. This well-attended, commercial real estate networking event included cocktails, dinner and a live band. The evening also included a silent and live auction, as well as a drawing with a significant portion of the proceeds benefiting WISEPlace (www.wiseplace.org) and CREW Network Foundation (www.crewnetwork.org).

Live Auction and Attendees

The Master of Ceremonies was Mike Raring from AAA Property Services, who also led the live auction.

CREW's Summer Party attracted approximately 170 commercial real estate professionals from all facets of the industry who represented Orange County, the Inland Empire, San Diego and the Los Angeles markets. This successful event raised over \$10,000 for WISEPlace and CREW Network Foundation.

WISEPlace

Executive Director for WISEPlace Kathi Bowman spoke at the dinner, along with Patti, a WISEPlace alumnae who shared her story. Formerly the South Orange County YWCA, WISEPlace has a 90-year history of caring for local women, children and families. By meeting basic needs such as housing, clothing, physical and emotional nourishment, as well as vocational and life skills training, the WISEPlace Hotel for Women is one of the few places homeless women can go to begin again.

CREW Network Foundation

CREW Network Foundation is the only foundation dedicating its resources solely towards building opportunities for women and girls in commercial real estate. CREW Network Foundation implements and supports CREW Network's career outreach agenda, which cultivates future women leaders in the industry through participation in a continuum of educational outreach, as well as scholarship and mentoring programs.

Sponsors

The CREW-OC Summer Party was co-chaired by Anita Makwana, director, Interior Architecture & Design for Ware Malcomb and Dawn Perry, senior property manager for Lincoln Property Company.



Sponsors for the evening include the following:

Main Event Sponsors

- ▶ Bank of the West
- ▶ Cox Business

Table Sponsors

- ▶ AAA Property Services
- ▶ Greenlaw Partners
- ▶ Herman Miller/Pivot
- ▶ NPG-Nelson Paving
- ▶ Pinnacle Landscape
- ▶ PM Realty Group
- ▶ Sanders & Wohrman Corp.
- ▶ Stuart Kane LLP
- ▶ United Paving Co.

About CREW-Orange County

CREW-Orange County is a member organization of the Commercial Real Estate Women ("CREW") Network and has been serving Orange County real estate professionals since 1988. CREW-Orange County is a nonprofit organization established to promote and sponsor educational and professional activities for its members in the field of commercial real estate. For more information about CREW-Orange County, please visit www.crew-oc.org. You can also find CREW Orange County on Facebook and LinkedIn.



With 70 locations, Premier Business Centers is a leading provider of executive offices in the U.S.



New clients can get up to
2 MONTHS FREE RENT
on a full time office agreement of at least 12 months.*



Places to Work

- Prime business addresses
- Full & Part time offices
- Shared Workspace

Virtual Business Presence

- Phone answering and mail services
- Dedicated support teams
- Access to 70 prime locations

Places to Meet

- Conference rooms
- Meeting rooms
- Training rooms

*Some restrictions apply.



California • Florida • Ohio • Texas • Washington • Colorado • Arizona • Hawaii

PBCENTERS.COM

INQUIRE TODAY

1.877.697.8483

The Ranch at Eastvale ... a 10-Year Journey

The Ranch at Eastvale ("The Ranch") has been a long and winding road. The project started under Master Development Corporation ("MDC") from 2006 to mid-year 2013. In Aug. 2013, Bryan Bentrott, a co-founder of MDC, picked up the torch and is currently running the project. "Bentrott's new company is called Summit Development Corporation."

The story begins when MDC was developing small buildings along the Euclid corridor in Chino during the 2004-2006 time frame. MDC reaped the rewards of developing 33 buildings at Euclid and Schaefer Avenue in the City of Chino. After selling 33 buildings to owner/users, MDC turned its attention to a well-located, 100-acre site in Riverside County in Jan. 2006. The 100-acre site, located in the northwest corner of Riverside County, was ideally positioned for the next wave of industrial growth moving east from the Chino industrial market.

The timing of this growth, expected to occur in 2008, actually took until late 2013 to take shape. The Great Recession griped the industrial market from 2008 until 2011 and the beginnings of the industrial market recovery took hold in 2012 with the development and leasing of "big box" industrial buildings in the 500,000 to 1M S.F. in size. The industrial market recovery from 2012-2014 was a "top down" driven recovery led by the absorption of big box buildings, but the seeds of recovery for the "mid-range" sizes in the 100,000 to 300,000 S.F. range were gradually being sown.

In Dec. 2013, the principals at MDC amicably completed a 20-year business relationship. In that parting, Bentrott took over the Eastvale transaction and, 30 site plans later, The Ranch finally became a reality.

What happened in the 18-month period from Aug. 2013 to Feb. 2015? Answer: The Inland Empire West Market got extremely tight in all size ranges. In fact, the target size range for the Phase I buildings at The Ranch experienced the most dramatic improvement as illustrated by these statistics:

- ▶ 70M square foot base of Class-A freestanding industrial buildings between 100-300,000 S.F.
- ▶ Vacancy factor is 2 percent
- ▶ 52 transactions per year since 2004
- ▶ 15 Class-A buildings available as of first quarter 2015

The Ranch will feature a full range of industrial and business park space along with a small component of retail space to support the business park. The Phase I industrial buildings range from 73,000 S.F. to 320,000 S.F. and will be completed as of Fourth Quarter 2016.

They say "good things come to those who wait." If that is the case, the entire Eastvale team should expect great success. Our team includes the following professionals:



Architect: MacDavid Aubort Architects
Contractor: Fullmer Construction
Civil Engineer/Entitlement
Consultant: Webb Associates
Broker: The Colliers Ontario team led by Tom Taylor and Josh Hayes.

In closing, Summit Development is extremely thankful to Landmark Capital Advisors (Adam Deermount and Dave Kidder) for helping us form the equity partnership to entitle and acquire this property.

For more information, contact Summit Development at 949.655.8226 or visit www.sumdevco.com.

GETTING IN ON THE GROUND FLOOR.

MARK IV CAPITAL WOULD LIKE TO WELCOME **TIAA-CREF** TO THE GROUND FLOOR OF THE NEWEST CLASS-A OFFICE BUILDING IN NEWPORT BEACH, 4450 MACARTHUR BOULEVARD.



Mark IV Capital would like to thank Dean Chandler, Weston Chandler and Josh Leibowitz of CBRE for their representation in this transaction.

A 4,195 square foot ground floor suite is still available for lease in the building. Featuring 11-foot ceilings, prominent signage on MacArthur Boulevard, operable windows, a private outdoor patio and built-to-suit tenant improvements.

USGBC LEED Gold application in process, pending approval.

CALL DEAN CHANDLER
 AT CBRE FOR
 LEASING INFORMATION
949.725.8515
 LIC. 00833627



MARK **IV** CAPITAL

Celebrating Over Forty Years • Founded in 1974

WWW.MARKIV.COM • (949) 509-1444

Lending Nominees



Loan: Outlets at San Clemente
Nominee(s):
Wells Fargo
 Kim Surch
 Ilya Voziyan
Union Bank
 John Stephens
 Brian Brown
U.S. Bank
 Cathy Janke



Loan: Jasmine Place Apartments
Nominee(s):
Capital One Multifamily Finance
 Kristen Croxton
 Greg Reed
Golden Horizon Realty
 Marianne Moy
 Marlowe Moy
The REMM Group
 Sara D'Elia
 Shawn Conerty



Loan: Bixby Land Company
Nominee(s):
Bank of America Merrill Lynch
 Teri Brown
 Jennifer Fondry
 Kevin Jennings



Loan: Montage Laguna Beach
Nominee(s):
Cornerstone Real Estate Advisors Inc.
 Christian Andersson
 Derick Lao
 Lydia Shen

Loan: Airport Business Center
Nominee(s):
CBRE
 Sharon Kline
 Marina Massari
 Brian Halpern



Loan: Hearthstone Apartments, Santa Ana
Nominee(s):
Bank of the West
 Mark Wortmann



LEE & ASSOCIATES CONGRATULATES ORANGE COUNTY'S TOP PRODUCERS OF 2014

With 130 agents and 3 offices in Orange County, Lee & Associates has you covered locally. With 52 offices across the country, we have you covered nationally as well.

Each office is owned by the agents in that office giving you the peace of mind that they have a vested interest in your satisfaction.

LEE & ASSOCIATES
 Local Expertise.
 National Reach.
 World Class.

LEE & ASSOCIATES
 COMMERCIAL REAL ESTATE SERVICES
www.lee-associates.com

LEE & ASSOCIATES - NEWPORT BEACH, INC. • 100 Bayview Circle, Suite 600 Newport Beach, CA 92660 T: 949.724.1000 | F: 949.862.9048



JIM SNYDER, CCIM
 Industrial/Investment



GARY MCADELL
 Office



SEAN AHERN
 Office/Industrial



TED SAWYER
 Industrial/Investment



JOHN COLLINS
 Industrial/Office

LEE & ASSOCIATES - IRVINE, INC. • 111 Pacifica, Suite 300 Irvine, CA 92618 T: 949.727.1200 | F: 949.727.1299



PHIL COHEN
 Office



BRIAN GARBUTT
 Office



KURT BRUGGEMAN
 Office/Investment



RYAN SWANSON
 Industrial/Investment



JEFF BISCHOFBERGER
 Industrial/Investment

LEE & ASSOCIATES - ORANGE • 1004 W. Taft, Suite 150 Orange, CA 92865 T: 714.647.9100 | F: 714.543.5285



DAVID NEWTON, SIOR CCIM
 Office/Industrial



SCOTT SEAL
 Industrial



JOHN SON
 Industrial/Investment



CLIF FINCHER, SIOR
 Industrial



GREG DIAB
 Industrial

Leasing Nominees

Project: Centrum North – Spine and Sports Specialties
Nominee(s):
Cypress West Partners
Bryan McKenney



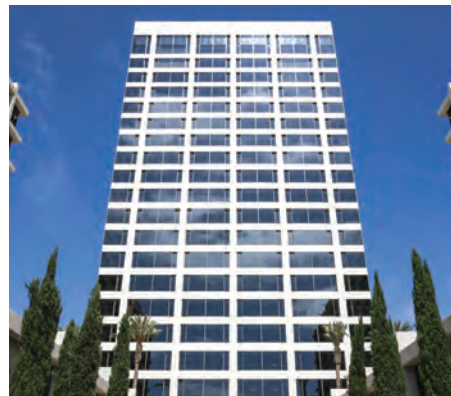
Project: TEN: The Enthusiast Network
Nominee(s):
Hughes Marino
David Marino



Project: Yokohama Tire Company
Nominee(s):
CBRE
Ben Seybold
Andrew Morrow



Project: Orange County Transportation Authority
Nominee(s):
CBRE
Peter Andrich
Rick Warner
Matt Osborn



Project: 520 Newport Center Drive
Nominee(s):
CBRE
Andy Nott



Project: HD Buttercup @ SOCO
Nominee(s):
Burnham Ward Properties
Scott Burnham
Bryon Ward



Project: 200 Center Street
Nominee(s):
JLL
James Estrada
George Thomson



You inSPIRE Us.

Congratulations to all of the SPIRE Awards winners and nominees. We celebrate your accomplishments and commitment to superior performance in real estate.

To find out more about our properties, visit IrvineCompanyOffice.com or call 949.720.2550



We are proud to support the **CREW-OC Spire Awards** in celebrating Superior Performance in Real Estate

Gensler

4675 MacArthur Court, Suite 100
Newport Beach, CA
949.863.9434
www.gensler.com

SARES•REGIS Group



- Planning For Growth
- Developing For Commerce
- Building & Managing For People

SRG in Irvine, California, is one of the leading developers and managers of commercial and residential real estate in the Western U.S. In addition to managing fee-based and portfolio assets valued at more than \$4 billion, SRG is the leading privately held developer of LEED-rated apartments and commercial buildings in California.

SRG will break ground in 2015 on 3.5 million sq. ft. of state-of-the-art industrial and office projects. In addition, SRG manages 20 million sq. ft. of commercial property throughout the West.

SRG has 3,087 luxury apartments under development and construction in California while managing more than 16,200 apartment homes in the Western states.

SARES•REGIS Multifamily Fund completed deployment of \$114 million in equity for value-add opportunities with its ninth acquisition. Capitalization of the 1,377 apartments totaled \$329 million.

SRG developments and assignments, clockwise from top left: Automotive trade school for UTI under way at Douglas Park, Long Beach; Chino Logistics Center; The Boulevard apartments in Woodland Hills; The Reserve at 45 Ranch in San Diego; rendering of Vireo apartments planned in Irvine; and Jacaranda, one of 11 FountainGier communities in Southern California.



Building Renovations Nominees

- Project: Hoag Health Center – Huntington Beach**
Nominee(s):
Hoag Memorial Hospital Presbyterian
 Karen Torres
California Commercial Real Estate Service
 Genevieve West
International Parking Design (IPD)
 Don Marks
McCarthy Building Companies
 John Konstantinidis
Quest Construction Company
 Mike Paquette
Howe Bonney & Associates
 Jim Ardary
Hensel Phelps
 Scott Mongeau
Boulder Associates
 Carissa Nook



- Project: Emerson Process Management**
Nominee(s):
Ware Malcomb
 Ted Heisler
KPRS Construction Services
 Randy Workman
Hahn Partners
 David Hahn
Glumac International
 Jonathan Mitsumori
Brandow & Johnston
 Ryan Bishoff
Tangram Interiors
 Mark Wild
Steelcase
 Karen Gregor



Western National Property Management is Proud to be a Distinguished Sponsor of the 4th Annual SPIRE Awards Gala



For over 50 years, Western National Property Management has excelled at providing value and service to property owners and residents in our communities. With more than 25,000 units in over 170 apartment communities throughout California, Nevada, and Utah, Western National Property Management is among the largest multifamily property management companies in the Western United States.



WESTERN NATIONAL PROPERTY MANAGEMENT
 CA BRE LIC #00838846

8 Executive Circle, Irvine, California 92614
 www.wng.com • (949) 862-6200



- Project: 27 Seventy Five Apartments**
Nominee(s):
RD Olson Construction
 Ian Gardiner
 Marc Tran
Newman Garrison + Partners
 Lori Michelle



- Project: The Village at Nellie Gail Ranch**
Nominee(s):
Nadel Architects
 Greg Lyon
 David Anderson, AIA
 Keith Martinez
Vintage Real Estate
 Fred Sands
 Jerry Garner

- Project: Christ Cathedral Tower of Hope**
Nominee(s):
LPA Inc.
 Bryan Seamer
 Jim Wirick
JLC Associates
 Jeff Cadieux
MATT Construction
 Kevin Pitzer
 Darrell Webb
Saunders Commercial Seismic Retrofit
 Amber Zamora
 Joseph Hartline
Lamprecht ArchiTEXTural
 Barbara Lamprecht



Building Renovations Nominees

Project: Ocean Ranch Village Re-Imaging
Nominee(s):
Shea Properties
 Lillian Kuo
 Carol Trueman
 Lynda Pekar
 Victoria Auer
 Gabriela Lester
Bayley Construction
Site Design Studio



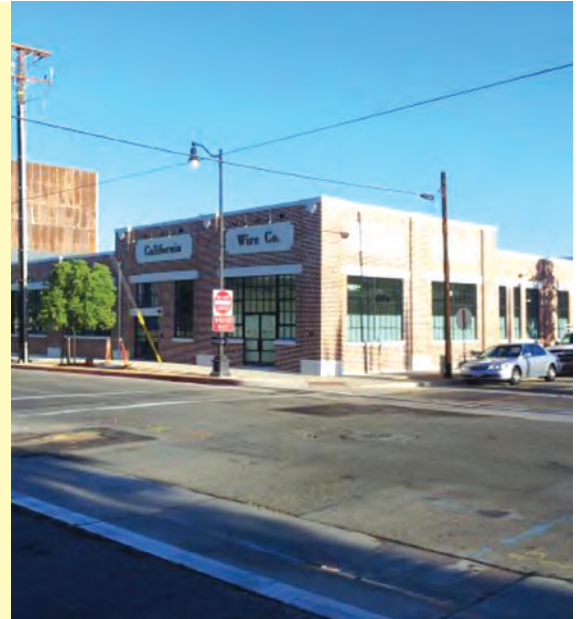
Project: The Tower on Nineteenth
Nominee(s):
Reiner Communities
 Jordan Freedman
Ground Floor Design
 Erik Marcussen
IDG Structural Engineering Inc.
 Farshid Beshid
Imperial Contracting
 Andy Cooper
Saunders Construction Inc.
 Amber Zamora



Project: The Market Place in Tustin Community Center
Nominee(s):
robinson hill architecture
 Michael David Robinson
Irvine Company Retail Properties
 Bob Lisle
 Elizabeth McKenna
 Andrew Backer
Romey Design
 Janet Romey
Savant Construction Inc.
 Brad Hastings
Redstick Development Inc.
 Kurt Duerfahrd
firstcircle
 Matt Levesque



Project: Chapman University – Digital Media Arts Center
Nominee(s):
Chapman University
 Kris Olsen
Abacus Project Management
 Russell Thompson
AC Martin Partners
 Bob Murrin



unparalleled

ən.pərəˈleɪd / adjective

1. having no parallel or equal

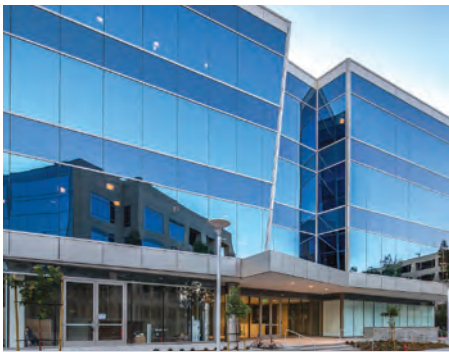
synonyms: exceptional, unique, without parallel, unequalled, unprecedented, without equal, unrivaled, second-to-none, unsurpassed, incomparable



Caliber Construction Inc.
 240 North Orange Avenue | Brea CA 92821
 714-255-2700 | sales@caliberconstructioninc.com
 caliberconstructioninc.com

Caliber
 CONSTRUCTION, INC.

New Construction Nominees



Project: Scholle-Impac Center (19510 Jamboree Road)
Nominee(s):
Westgroup Designs
PariSima Hassani
Shazad Ghanbari



Project: Courtyard by Marriott Irvine Spectrum
Nominee(s):
R.D. Olson Construction
Joe Cervantes
Jeremy Briggs
WATG
Rafael F. Velazquez



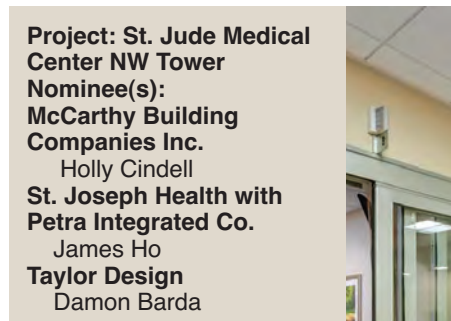
Project: Beach and Ocean Apartments
Nominee(s):
Driver URBAN
Brian Chartrand
Louie Villa



Project: Anaheim Regional Transportation Intermodal Center (ARTIC)
Nominee(s):
Clark Construction Group – CA, LP
Dave Burrus
Parsons Brinkerhoff
Samuel Sims



Project: Hyundai Motor America U.S. Corporate Headquarters
Nominee(s):
Hyundai Motor America
Michael Fox
Gensler
JoBeth Skaggs
Snyder Langston
Jo-E Immel



Project: St. Jude Medical Center NW Tower
Nominee(s):
McCarthy Building Companies Inc.
Holly Cindell
St. Joseph Health with Petra Integrated Co.
James Ho
Taylor Design
Damon Barda



Project: Anaheim Concourse
Nominee(s):
CBRE
Brad Bierbaum
Brian DeRevere

CONGRATULATIONS SPIRE AWARD NOMINEES

CRAIG REALTY GROUP
craigrealtygroup.com

EMPOWERING WOMEN IN COMMERCIAL REAL ESTATE FOR 30 YEARS

CITADEL OUTLETS
LA'S CHOICE FOR OUTLET SHOPPING

OUTLETS at San Clemente
OPENING FALL 2015

Sales Nominees

Project: Bank of America Campus
Nominee(s):
Cushman & Wakefield
Jeff Cole
Ed Hernandez



Project: 18301 Von Karman
Nominee(s):
Cushman & Wakefield
Jeff Cole
Ed Hernandez



Project: Largest Creative Office Redevelopment Project in the IBC
Nominee(s):
Voit Real Estate Services
Michael Hartel



Project: Masimo
Nominee(s):
Zuvich Corporate Advisors Inc.
Oliver Ternate
Mark Zuvich

WILLIS

CONGRATULATES ALL OF THE

SPIRE AWARD NOMINEES

We are proud to give our support to this event representing some of our local community's best and brightest talent in commercial real estate.

www.willis.com

(949) 885-1200

Throughout North America, Willis has over 800 Real Estate and Hotel Clients, annually placing over \$1.5 billion in premiums into the insurance capital marketplace.

Willis

IRVINE | LOS ANGELES | SAN DIEGO



Tenant Improvement Nominees

Project: SOS Children & Family Health Center
Nominee(s):
LPA Inc.
 Chris Lentz
California Commercial Real Estate Service
 Genevieve West
Share Our Selves (SOS)
 Karen L. McGlenn
dBac
 John Curci



Project: Lionakis Newport Beach Office Tenant Improvement
Nominee(s):
Lionakis
 Valerie Hoffman
Thorpe Construction
 Mark Thorpe
Savills Studley
 Michael Props
Anderson Audio/Visual
 Matt Rapoza
Emmes Realty Services of California
 Ashley Proctor



Project: tk1sc Headquarters
Nominee(s):
H. Hendy Associates
 Heidi Hendy
 Kerry Wilson
tk1sc
Cushman & Wakefield
The Irvine Company
Turelk
System Source



Project: AltaMed Santa Ana-Bristol Health Services Center
Nominee(s):
Marquis Construction Inc.
 David James

Project: Predixion Software
Nominee(s):
HKS Architects
 Maria Martinico
Predixion Software
 Steve Desantis
Cresa
 Rick Martin
Amaron Construction Corp.
 Brandon Sistrunk
Corporate Office Interiors
 Lisa Hoxter
tk1sc
 Daniel Lassalle



YOUR BUSINESS DESERVES

a higher level of expertise at every level.

When you need financing, U.S. Bank's Commercial Real Estate Division is ready with the industry's best line-up of innovative products and services. All backed by the stability of one of America's strongest banks. U.S. Bank. It's not just what a successful company requires, it's what you deserve.

U.S. Bank is proud to sponsor the SPIRE CREW Awards... recognizing superior performance in Orange County real estate.

usbank.com

Member FDIC.
 ©2015 U.S. Bank.
 7558



Project: Greenlaw Partners Corporate Office
Nominee(s):
Greenlaw Partners LLC
 Wil Smith
H. Hendy Associates
 Jennifer Walton
Wallcon Inc.
 Dave Walling



Project: Consolidated Fire Protection
Nominee(s):
HKS Architects
 Maria Martinico
Consolidated Fire Protection
 Linda Nguyen
Cresa
 Rick Martin
Turelk Inc.
 Michael Turi
tk1sc
 Daniel Lassalle
Corporate Office Interiors
 Lisa Hoxter



Tenant Improvement Nominees



Project: Shook, Hardy & Bacon LLC
Nominee(s):
KPRS Construction Services Inc.
Susy Dowell
Frank Palacios



Project: Chapman University – Harry & Diane Rinker Health Science Campus
Nominee(s):
Chapman University
Kris Olsen
Abacus Project Management
Kurt Rield
Aday Architects
Troy Aday



Project: Newmeyer & Dillion LLP
Nominee(s):
KPRS Construction Services Inc.
Randy Workman
Juan Rivas



Project: Carollo Engineering
Nominee(s):
Spaces Planning & Design
Randall Patrick
Stephanie Summa
Margaret Sharpe
Emmanual Latini

Project: Oculus, Newport Beach
Nominee(s):
Turelk Inc.
Toni Scarpinato
Oculus
Laird Malamed
Gensler
Nikki Rosenberg
The Irvine Company
Dena Langston



Project: Endologix
Nominee(s):
Endologix
Todd Abraham
Cresa
Rick Martin
Turelk Inc.
Michael Turi
Little Architects
David Oh



Newmeyer & Dillion



Shook, Hardy & Bacon

KPRS Construction: Building Southern California. Knowledge and dedication sets us apart. We provide our clients with industry-leading solutions; building on time, on budget, and with quality. Learn more about what we can do for you at www.kprsinc.com

KPRS congratulates Newmeyer & Dillion and Shook, Hardy & Bacon on their Crew SPIRE Award nominations.



SOS Children & Family Health Center
307 Placentia Ave, Newport Beach, CA 92663

We appreciate the honor of being nominated for the Superior Performance in Real Estate (SPIRE) Awards and we congratulate all of our fellow nominees.

Our clients dream it and we build it. 23 years as a General Contractor in Orange County.

101 Shipyard Way, Suite A, Newport Beach, CA 92663
Phone 949 723 0147 | Fax 949 723 0126
www.dbacinc.com

License # 637651

Women in CRE Nominees



Nominee:
Massy Farzine
ESDI Inc.



Nominee:
Diane Fiorelli
Langan Engineering
& Environmental Services



Nominee:
Holly Cindell
McCarthy Building
Companies Inc.



Nominee:
Shay Hughes
Hughes Marino

The Power of CREW: An Orange County Business Organization Celebrates 25 Years

Business leaders gather at the Pacific Club in Newport Beach. There are handshakes and cards exchanged, followed by an active discussion as the group interacts with an expert panel on emerging foreign capital sources in real estate development.

It's the first luncheon of the year for Commercial Real Estate Women - Orange County, an organization that provides members with a network to strengthen and extend business relationships and form valuable personal contacts.

The organization, which is a chapter of the larger, national CREW Network, celebrates its 25th Anniversary in 2015, and is planning a myriad of events to demonstrate its thanks to members and sponsors.

"CREW Network was established in 1989 as a support and networking tool for women in the male-dominated industry of commercial real estate," explains Angela Kralovec, a vice president with BlackRock and 2015 president of CREW-OC. "In Orange County, the strong group of women who founded our chapter saw the need for women in commercial real estate to connect on a local and national level."

Today, these connections are essential to the success of the organization, which continues to grow in membership.

"Twenty-five years after CREW-OC's inception, the number and role of women in the commercial real estate industry continues to grow," says Kralovec. "Our chapter now includes nearly 170 members, and demonstrates strong growth each year."

This growth mirrors that of the national CREW Network, which posted a 9 percent increase in membership from 2013 to 2014, reaching an all-time high of 9,447 members across 72 chapters in the U.S. and Canada.

The size and strength of the national network is a major boon to local members, according to Kralovec, who notes that CREW-OC members have access to professionals throughout North America — a fact that can help members to strengthen their individual career growth.

"When CREW-OC began in 1990, people were unfamiliar with CREW as a larger organization," she says. "Today, our members are able to leverage these relationships in order to strengthen and extend business relationships and form valuable personal contacts."

To nurture these contacts, CREW-OC offers an extremely strong base of events, encompassing lunch programs, a summer charity party and various member-only events throughout the year.

The organization also conceptualized and created Orange County's only commercial real estate awards program - the SPIRE Awards - a program that will take place at The Center Club in Costa Mesa on Thursday, Feb. 26, 2015.

In June, the group will celebrate its special 25th Anniversary with a members-only cruise of Newport Harbor, offered at no cost to members.

"As we celebrate this important anniversary, we want to ensure that our members continue to benefit from the unique networking and mentorship opportunities that our organization can deliver," says Kralovec. "The women and men of CREW-OC are leaders in their companies, and in Orange County, and we will continue to support them as they advance in this industry."

For more information on Commercial Real Estate Women - Orange County (CREW-OC), visit www.crew-oc.org.

auction.com

Congratulations to the SPIRE Award Nominees and Winners

Partner with us, and leverage the power of Auction.com to close your next deal.

www.auction.com/spire

WHERE REAL ESTATE IS MOVING™

View licensing at
www.auction.com/licensing



High Visibility, Mixed-Use Property
Tustin, CA • 75,373 SF
84% Leased • CAs Signed: 144



Single-Tenant, Net-Leased Industrial
Yorba Linda, CA • 50,282 SF
100% Leased • CAs Signed: 133



Office on Mariner's Mile
Newport Beach, CA • 17,108 SF
Vacant • CAs Signed: 115



Ideally-Located, Garden Style Office
Santa Ana, CA • 20,900 SF
100% Leased • CAs Signed: 138

Philanthropy Nominees



Nominee(s):
Jason Rich, Snyder Langston
 Project name: **Snyder Langston B.R.I.D.G.E. Program**



Nominee(s):
Adele Green, Bank of America
 Along with: Blu Bear
 Project name: **CHOC Pet Therapy Program**



Nominee(s):
Cathy Janke, U.S. Bank
 Project name: **Women for Girls; and Girls Inc.**

Nominee(s):
Michael Harrison, Trico Realty
 Project name(s): **Irvine Ranch Outdoor Education Center Advisory Committee; Orange County Council, Boy Scouts of America; CHOC Padrinos; Orange County Ronald McDonald House; Harbor Day School; and the Corona del Mar High School Cross Country Team**





4th Annual SPIRE Awards



CREW OC is happy to present the judges list for the 4th Annual SPIRE Awards!

Laura Khouri, President,
 Western National Property Management

Steve Case, EVP,
 Irvine Company

Emily Mandrup, Development Manager,
 Pacific Industrial

Russell Thompson, Principal,
 Abacus Project Management

Scharrell Jackson, Chief Financial and Operating Officer,
 Squar Milner

Dean Demetre, Partner,
 Sheppard Mullin Richter & Hampton

Scott McPherson, SVP and Market Manager,
 US Bank

Randy Wallen, Regional VP of Sales, Commercial Real Estate Division,
 Auction.com

Becky Sullivan, VP Construction and Development,
 DJM

Dana White, Vice President,
 Bank of the West

 **Thank you CREW-Orange County for hosting the 4th Annual SPIRE Awards. Congratulations to all nominees!**



**We save you money.
 We make you money.
 Ask us how.**

**Tel 714-739-2200
 info@united-paving.com**

 **UNITED-PAVING.COM**

asphalt - concrete - seal coating - striping - A.D.A. upgrades - asphalt - concrete - seal coating - striping - license #865828



1300 Quail, Owned by: TREF CA1, Managed by: Kraus Management Services

Another Award-Winning Outcome

Caliber Construction, Inc. was pleased to lead the restorations that took 1300 Quail Street, Newport Beach from a circa 1970 aesthetic to award winner as The Outstanding Building of the Year (TOBY) in the Renovated Building category from the Building Owners and Managers Association (BOMA), Orange County Chapter.

We are proud to have partnered with Turner Real Estate Investments to produce a modern California office building now operating with environmentally sensitive landscaping and common spaces that evoke the future of commercial buildings as productivity enhancers and operational assets.



For over 24 years, Caliber Construction has mastered the unique issues of commercial construction throughout California and produced landmark projects with a certainty of outcome.

Learn more about Caliber Construction at www.caliberconstructioninc.com or call Doug Bassett or Jim Roy at 714.255.2700.



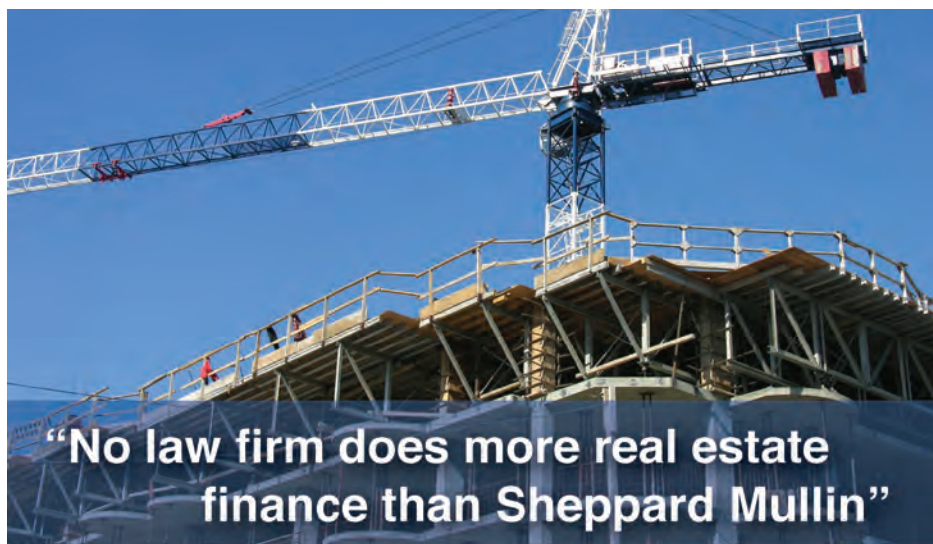
Leading to Change

Diversity inspires innovation

That's why CREW Network dedicates its resources to influencing the success of the commercial real estate industry by advancing the achievements of women.

Creating opportunities for women to succeed in business, developing effective leaders, informing the industry, and educating women and girls about career opportunities ensure that the commercial real estate industry remains not only a rewarding career choice but a viable industry.

CREW Network®
 CREW Network chapters are located in more than 70 major markets across North America. Join a CREW Network chapter today.
 888.866.CREW
 WWW.CREWNETWORK.ORG



"No law firm does more real estate finance than Sheppard Mullin"

No firm does more real estate finance legal work for major banks and financial institutions than Sheppard Mullin. Our clients are the best of the best in real estate finance, including U.S. Bank, General Electric Capital Corporation, Bank of America, Comerica Bank, Wells Fargo Bank, Union Bank and more.

How can we help you? Contact Partner Dean Demetre at ddemetre@sheppardmullin.com or 714.513.5100.



www.sheppardmullin.com | www.bankruptcylawblog.com

Beijing | Brussels | Century City | Chicago | Del Mar | London | Los Angeles | New York
 Orange County | Palo Alto | San Diego | San Francisco | Seoul | Shanghai | Washington, D.C.

Be inSPIRED!

SAVE THE DATE! FEBRUARY 26, 2015

CREW - ORANGE COUNTY PRESENTS
THE 4TH ANNUAL SPIRE AWARDS
SUPERIOR PERFORMANCE IN REAL ESTATE

Master of Ceremonies
Steven L. Craig
 President/CEO
 Craig Realty Group

Keynote Speaker
Janet Nguyen
 State Senator
 State of California

THE CENTER CLUB
650 TOWN CENTER DRIVE, COSTA MESA, CALIFORNIA
5:15 pm to 8:30 pm awards cocktail reception

Through February 13, 2015 until 5pm:
 \$55 for members
 \$75 for non-members

After 5pm on February 13, 2015:
 \$75 for members
 \$95 for non-members

No refunds for cancellations received after 5pm on February 20. No shows and cancellations will be billed.

FOR INFORMATION ON ATTENDING THE SPIRE AWARDS, PLEASE GO TO:
WWW.CREWOCSPIREAWARDS.COM

CREW
NETWORKING FOR SUCCESS
 FOR MORE INFORMATION, PLEASE VISIT:
WWW.CREW-OC.ORG



A Land Advisors Company

SUCCESSFUL FUNDING

On behalf of Summit Development Corporation, Landmark Capital Advisors is pleased to announce the successful equity capitalization of

EASTVALE ONE, LLC



**SUMMIT DEVELOPMENT
CORPORATION**



Proceeds of \$5,000,000 shall be used to re-entitle 76 net acres of land in Eastvale, CA for the development of approximately 2,000,000 square feet of mid-range industrial and commercial space.

Adam Deermount

949.706.7940

adeermount@landmarkcapitaladvisors.com

David Kidder

949.706.7940

dkidder@landmarkcapitaladvisors.com

Landmark Capital, a real estate capital advisory firm disciplined in finance and private equity, works with owners, investors, and developers of commercial real estate and residential land. Since inception, the company has raised more than \$225 million of real estate capital through institutional, private, and family office investors.



1201 Dove Street, Suite 500
Newport Beach, California 92660
www.landmarkcapitaladvisors.com



Mark your calendars for these 2015 CREW-OC Events!

Date	Event	Location
March 10	Luncheon: Orange County: Past, Present & Future	Pacific Club
April 22	Luncheon: Seniors Housing & Healthcare	Pacific Club
May 12	Luncheon: Hospitality	Pacific Club
June 11	25th Anniversary Celebration (members only)	Newport Beach Cruise
June 18-19	2015 CREW Network Spring Leadership Summit	Baltimore, MD
July 21	Luncheon: Rainmaker Panel	Pacific Club
August	Annual Summer Party	Balboa Yacht Club
September 15	Luncheon: Anatomy of a Deal: Outlet Mall in San Clemente	Pacific Club
Sept 30 - Oct 3	2015 CREW Network Convention & Marketplace/ Fall Leadership Summit	Bellevue, WA
November 10	Luncheon: Capital Markets	Pacific Club
December	Annual Holiday Party (members only)	TBA

2015 Annual Sponsors

Platinum **Brower MILLER + COLE** **CapitalOne** **ORANGE COUNTY BUSINESS JOURNAL**

Gold **BLACKROCK** **BuildingEngines** **eljs** **NPG** **RUTAN ATTORNEYS AT LAW** **SALINDERS** **UNITED PAVING CO.** **TROUTMAN SANDERS**

Silver Craig Realty Group | EastWest Bank | Greenlaw Management | PM Realty Group | Ware Malcomb

Bronze Parking Concepts, Inc.

Affiliate AAA Companies | Able Services | American Technologies, Inc. | Caliber Paving Company, Inc. | Climatec, LLC
Highland Commercial Roofing | Painting Unlimited, Inc. | Pivot Interiors | Vista Paint Corporation

www.crew-oc.org

