



Presents the Fifth Annual

SPIRE Awards

HONORING

Superior Performance In Real Estate



CREAWARD
ORANGE COUNTY

Commercial Real Estate Awards

March 10, 2016

THE CENTER CLUB

650 Town Center Drive, Costa Mesa, California
5:30 pm - 8:30 pm



Master of Ceremonies
Perry Schonfeld
Principal & COO
LBA



Keynote Speaker
Brandon R. Birtcher
CEO
Goodman Birtcher
North America



Keynote Speaker
Brooke Birtcher Gustafson
Vice President,
Development Operations
Goodman Birtcher
North America

Premier Sponsors



Grand Sponsors



Distinguished Sponsors



Supporting Sponsors



Media Sponsors





Coastline Development is a contractor with a reputation for quality, competitiveness, financial strength and ethical business practices. We have serviced our clients for 30 years, focusing on expanding efforts in the tenant improvement and new construction market. We take pride in our accumulative record of successful project completion, on time scheduling and within budget. Contact Us At:

Coastline Development, Inc.
714.265.0250 F: 714.265.1701 • www.coastlinedevelopment.com



30 Years in Business



CREW-OC Board Members 2016



Francesca Braniger
President/National Delegate
Sunwest Bank



Karen Flanigan
President Elect/National Delegate
Greenlaw Management



Angela Kralovec
Past President
BlackRock



Kristen Croxton
Treasurer
Capital One Multifamily Finance



Jennifer Bojorquez
Secretary
Troutman Sanders LLP



Josh Mons
Director - Membership
Squar Milner LLP



Diane Fiorelli
Director - Sponsorship
Langan Engineering & Environmental Services, Inc.



Eileen Doody
Director - Programs
PM Realty Group, LP



Karen Torres
Co-Chair - Programs
Hoag Hospital



Jennifer Quader
PR, Marketing, Communications
Brower, Miller & Cole



5th Annual SPIRE Awards



CREW OC is happy to present the judges list for the 5th Annual SPIRE Awards!

JUDGES

Wayne Pinnell, Managing Partner, Haskell & White, LLP

Kim Graham, Managing Director, Gensler

Rand Sperry, CEO, Sperry Commercial, Sperry Equities

Melanie Colbert, SVP Operations, LBA Realty

Elise Luckham, Vice President, Director of Real Estate, First American

Brenna Walraven, Founder and CEO, Corporate Sustainability

Mark Mueller, Senior Reporter and Editor, OCBJ

Jim Korona, Principal, Jake Enterprises

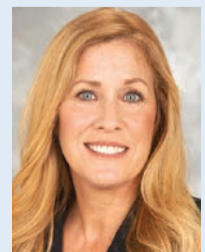
Camilla Mimi Kuo, Partner, Cox, Castle & Nicholson

Kevin Jennings, SVP, Commercial Real Estate Banking
Global Commercial Banking, Bank of America Merrill Lynch

CREW-OC SPIRE Co-Chairs



Karen Eddy



Catherine Falco



bar raising

Bank of America Merrill Lynch is proud to join in honoring the outstanding efforts of CREW-OC Spire Award Nominees.

Visit bofaml.com

Bank of America
Merrill Lynch



Bank of America
Merrill Lynch

The power of global connections™

"Bank of America Merrill Lynch" is the marketing name for the global banking and global markets businesses of Bank of America Corporation. Lending, derivatives, and other commercial banking activities are performed globally by banking affiliates of Bank of America Corporation, including Bank of America, N.A., Member FDIC. Securities, strategic advisory, and other investment banking activities are performed globally by investment banking affiliates of Bank of America Corporation ("Investment Banking Affiliates"), including, in the United States, Merrill Lynch, Pierce, Fenner & Smith Incorporated and Merrill Lynch Professional Clearing Corp., both of which are registered broker-dealers and Members of SIPC, and, in other jurisdictions, by locally registered entities. Merrill Lynch, Pierce, Fenner & Smith Incorporated and Merrill Lynch Professional Clearing Corp. are registered as futures commission merchants with the CFTC and are members of the NFA. Investment products offered by Investment Banking Affiliates: Are Not FDIC Insured • May Lose Value • Are Not Bank Guaranteed. ©2016 Bank of America Corporation. GCB-146-AD | ARQSWRVC

The Power of CREW: An Orange County Business Organization with Deep Roots

Business leaders gather at the Pacific Club in Newport Beach. There are handshakes and cards exchanged, followed by an active discussion as the group interacts with an expert panel on sustainability and optimization of energy use in commercial real estate.

It's the first luncheon of the year for Commercial Real Estate Women - Orange County, an organization that provides members with a network to strengthen and extend business relationships and form valuable personal contacts.

The organization, which is a chapter of the larger, national CREW Network, celebrated its 25th Anniversary last year, and plans to continue to provide members with events and activities that strengthen and extend business relationships.

"CREW Network was established in 1989 as a support and networking tool for women in the male-dominated industry of commercial real estate," explains Francesca Braniger, a Vice President with Sunwest Bank and 2016 President of CREW-OC. "In Orange County, the strong group of women who founded our chapter saw the need for women in commercial real estate to connect on a local and national level."

Today, these connections are essential to the success of the organization, which continues to grow in membership.

"Twenty-five years after CREW-OC's inception, the number and role of women in the commercial real estate industry continues to grow," says Braniger. "Our chapter now includes approximately 170 members, and demonstrates strong growth each year."



This growth mirrors that of the national CREW Network, which continues to post strong growth across more than 70 chapters in the U.S. and Canada.

The size and strength of the national network is a major boon to local members, according to Braniger, who notes that CREW-OC members have access to professionals throughout North America - a fact that can help members to strengthen their individual career growth.

"When CREW-OC began in 1990, people were unfamiliar with CREW as a larger organization," she says. "Today, our members are able to leverage these relationships in order to strengthen and extend business relationships and form valuable personal contacts."

To nurture these contacts, CREW-OC offers an extremely strong base of events, encompassing lunch programs, a summer charity party, and various member-only events throughout the year.

The organization also conceptualized and created Orange County's only commercial real estate awards program - the SPIRE Awards - a program that will take place at The Center Club in Costa Mesa on Thursday, March 10, 2016.

"As we plan our events, we want to ensure that our members continue to benefit from the unique networking and mentorship opportunities that our organization can deliver," says Braniger. "The women and men of CREW-OC are leaders in their companies, and in Orange County, and we will continue to support them as they advance in this industry."

For more information on Commercial Real Estate Women - Orange County (CREW-OC), visit www.crew-oc.org.

LEE & ASSOCIATES® SALUTES THEIR 2015 TOP PRODUCERS IN ORANGE COUNTY

Lee & Associates was founded in 1979 and has since grown to over 54 offices across the United States and Canada through the simple idea that successful agents would want ownership in their office. Lee & Associates is proud to provide Orange County with superior local expertise combined with a national reach.



GARY MCARDPELL
Office



SEAN AHERN
Office / Industrial



BRIAN GARBUTT
Office / Investment



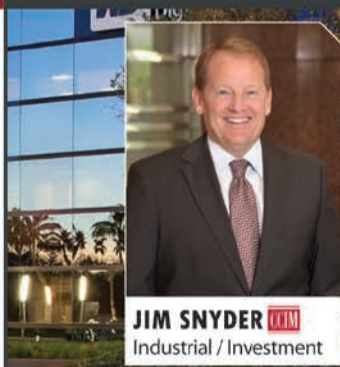
BRUCE HEATHCOTE
Retail



CHUCK NOBLE
Industrial / Investment



DAVE HUNSAKER
Industrial / Investment



JIM SNYDER
Industrial / Investment



PHIL COHEN
Office/Industrial



DAVID NEWTON
Industrial / Office



KEN GOULD
Retail / Investment



CHRIS COYTE
Industrial



ADAM WICKER
Office / Investment



RYAN SWANSON
Industrial / Investment



JACK HALEY
Industrial / Investment



GREG DIAB
Industrial / Investment



LEE & ASSOCIATES - NEWPORT BEACH
100 Bayview Circle, Suite 600
Newport Beach, CA 92660
T: 949.724.1000 | F: 949.862.9048

LEE & ASSOCIATES - IRVINE, INC.
9838 Research Drive
Irvine, CA 92618
T: 949.727.1200 | F: 949.727.1299

LEE & ASSOCIATES - ORANGE
1004 W. Taft, Suite 150
Orange, CA 92865
T: 714.647.9100 | F: 714.543.5285

TRANSFORMING REAL ESTATE INTO REAL ADVANTAGE

For every client, advantage is delivering the broadest, deepest reach and resources any real estate company offers.

Transforming property into prosperity, square feet into strong portfolios, scale into global strength. All in service of exceptional outcomes that build real business advantage. Let us put our actionable perspectives, global reach and powerful connections to work for your business.

For more information, please contact:

Kurt Strasmann
Senior Managing Director
+1 714 371 9320
+1 949 725 8660

Jeff Moore
Senior Managing Director
+1 949 725 8600

cbre.com/orangecounty
 @CBRESocal

CBRE *Build on
Advantage*



From L to R: Jessica Hyman; Angela Kralovec, BlackRock; Courtney Parks, Lincoln Property Company; Suzanne Skov, Daspin & Aument, LLP



From L to R: Kim Bangs, AAA Property Services; Regina Carlini, Stream Realty Partners; Arian Maher, Vestar Property Management; Kristen Quinlan, Sanders & Wohrman; Becky Rodarte, Stream Realty Partners

CREW Mixer Pulls in More Than 100

by Carrie Rossenfeld

CREW-OC's annual mixer event at the Fairmont Hotel in Orange County provided networking opportunities for members and guests, explained the benefits of membership and introduced the chapter's 2016 board of directors. More than 100 commercial real estate professionals gathered to enjoy drinks and appetizers while learning more about the Orange County chapter of Commercial Real Estate Women, which specializes in providing its members with opportunities to strengthen and extend valuable business relationships.

"The primary purpose of this mixer is to provide networking opportunities for our members and guests," says Francesca Braniger, a VP with Sunwest Bank and the 2016 president of CREW-OC. "On a macro level, CREW has almost 10,000 members throughout North America, and nearly 200 of those members are here in Orange County. Locally, we have a strong group of men and women who work in every facet of real estate, and each member brings different to the table, which is a benefit to the entire organization."

In addition to Braniger, CREW-OC's 2016 board of directors includes:

- ▶ Karen Flanigan of Greenlaw Management Inc., president elect/national delegate
- ▶ Jennifer Bojorquez of Troutman Sanders LLP, secretary
- ▶ Kristen Croxton of Capital One, treasurer

- ▶ Josh Mons of Squar Milner, director of membership
- ▶ Eileen Doody of PM Realty Group and Karen Torres of Hoag Hospital, co-chairs of programs
- ▶ Jenn Quader of Brower, Miller & Cole, director of public relations
- ▶ Diane Fiorelli of Langan Engineering & Environmental Services, director of sponsorship
- ▶ Angela Kralovec of BlackRock, immediate past president

"Our board of directors and committee leaders have so much in store for the coming year," Braniger says. "CREW-OC will offer more than seven industry-focused luncheons, a variety of networking events at exciting venues, as well as our annual SPIRE awards event." The SPIRE awards event will be held on March 10, 2016, and GlobeSt.com has reported on these awards throughout the nomination process.

"The camaraderie at CREW-OC is so unique, and it has been a powerful influence in my professional life," adds Braniger. "I encourage anyone who is interested in taking their career to the next level to get involved, join a committee and look for leadership opportunities."

Originally published by GlobeSt.com



NAI Capital Congratulates Your Outstanding Success



Sonya Dopp-Grech
Senior Vice President

\$43,950,000 Sale
Centrum North Building, Orange, CA
Class A Office/Medical Building
179,279 SF, Represented Buyer



Christopher Arvizu
Senior Vice President

\$33,500,000 Sale
Rossmoor Manor Apartments: Los Alamitos, CA
150 units, Represented Buyer



David Knowlton
Senior Vice President

\$26,700,000 Sale
Coast Apartments: Costa Mesa, CA
Azure Apartments: Redondo Beach, CA
81 Units, Represented Buyer



Tom Nguyen
Senior Vice President

\$15,000,000 Lease
520 Newport Center, Newport Beach, CA
Wing Lung Bank U.S. headquarters
New Class A Office Tower
17,630 SF, Represented Tenant



To learn what our market experts can do for you, contact NAI Capital today.

Brian Childs
EVP, Branch Manager

949.854.6600
naicapital.com

Transaction | Valuation | Consulting | Investment | Property Management



Strengthen your business with the power of ours.

Your business, big or small, needs solutions that are as unique as the Orange County landscape. That's where Cox Business excels. From the Fortune 500™ to your sole proprietorship, every customer receives the same level of dedication and commitment. Our voice, data and business TV solutions are scalable, reliable, and tailored to fit your needs. And while we are local, doing business where you do business, we have the power to reach nationwide. **Cox Knows Business.**

Let's Talk.
Call today to ask about our latest promotions!
(844) 203-0027
coxbusiness.com

Services not available in all areas. Other restrictions apply. ©2016 Cox Communications, Inc. All rights reserved.





Caliber's team built out the office space to include display spaces that can showcase products like the PowerFLEX Eco swimwear made from upcycled ECONYL®.



A seating area invites staff to collaborate and informally talk without the constraints imposed by a conference table or lunchroom setting.

Speedo's New Orange County Space

An innovative space to create pioneering products

It's only fitting that when a prolific swim and athletics product producer like Speedo decides to leave LA for an Orange County setting, they choose a space that allows them to create an office home as innovative as their products. Set in the Cypress' 600 acre business park, the 64,000 sq. ft. space shares the neighborhood with names like Mitsubishi and Siemens Medical Solutions. After securing the lease, it was time to cue a tenant improvements team from Caliber who is known for leading tenant improvements in multiple Cypress spaces and for giving life to brand-showcasing spaces for active lifestyle brands like Vans. Caliber's team, led by on-site Project Supervisor Aaron Moss, was able to introduce value engineering ideas that kept the move-in date on schedule and put in the unique features that help make their contemporary space even more distinctive.

Working Great Today, Flexible for Tomorrow

Being the production home to various Speedo functional specialists, the now

Caliber
CONSTRUCTION, INC.

refurbished Katella Avenue space started with features that gave space designers the freedom to call for workplace configurations suitable for every working style. If workplace design is at its best when end users can adjust the environment to their preferred work style and the space can be adaptable at various phases in the future, Speedo's new digs could be nearly perfect.

From kick-off, the industrial minimalist shell offered a raised access floor throughout. While raised flooring has been traditionally more common to IT data centers because it offers space for cables and mechanical systems as well as underfloor cooling, a raised floor throughout provides a service pathway for HVAC ductwork and cables for voice and power to reside below the floor. This meant that lighting, furniture and wall systems placement didn't have to be driven by the usual infrastructure restrictions and the large ceiling void space typically reserved in conventional construction could be eliminated. Higher open ceilings means more daylighting can be harvested, underfloor ventilation makes workers more comfortable and the space can be changed quickly and economically when demands shift in the years to come.

Picture the collection of workstyle options the Caliber team brought to life: collaboration clusters, private isolation shells and vast gathering areas, including one outfitted with twin 20-foot video screens ready to stream video for large groups and office gatherings. There are now floor to ceiling glass enclosed offices (many on the 18,000 square foot mezzanine level), linked office pods clustered together, and roughly 2800 square feet of open space with cubicles and open areas. The bundled office pods sprinkled throughout resemble small individual sheds with three foot openings shutable with 8 ft. x 10 ft. sliding barn doors. The translucent plastic and sheet metal paneled ceilings on each pod create a sound barrier while enabling light to be pulled in from the larger space.

"When we discovered a spec'd product produced in Europe would mean waiting 4-6 weeks to receive it, we got to work and found an equally refined product made here. This was another instance where applying creative approaches allowed us to ensure the client could stand firm with their move-in date without compromising the details and features that make their place their own. This kind of value engineering bridges the gap between a designer's vision and what it takes to make it happen in reality."

- Aaron Moss, Caliber Construction

Water Anyone?

Caliber's work continues onsite with the finalization of a 14 foot by 14 foot aboveground pool — visible from the double-story glass encased entry — where they can both demonstrate and test their products.

What will the Fastskin LZR Racer Bring to Rio?

While the corporate move may be complete, the results expected from 24 Speedo-sponsored athletes this summer at the Rio 2016 Olympic Games are an ongoing reminder that Speedo's aquatic innovations continue to stream forth.

For more information, contact Caliber Construction Inc. at 714.255.2700, 240 North Orange Avenue, Brea, CA 92821.



At JLL, we may deal in square feet but we don't believe in boundaries. We use our experience and market knowledge to increase the value of real estate, to enhance building performance, to help companies find space that drives productivity.

Making smart real estate decisions today can shape the future of your business. Let's plan ahead, together.

+1 949 885 2900

www.jll.com/orange-county

Leasing • Management • Sales • Finance • Consulting • Outsourcing





Real Estate Financial Reporting:

GAAP vs. Income Tax Basis Reporting—How to Choose the Best Method for Your Company

The majority of real estate companies have a choice on the method they use for financial reporting: Generally Accepted Accounting Principles “GAAP” or Income Tax Basis Reporting. While each has its advantage, it can be challenging to decipher the best method for each company. The best place to start is by evaluating their differences, which include the following:

Recognition of rental income:

► GAAP requires rental income to be recognized on a straight line basis over the life of the lease. Income Tax Basis reporting would align with the cash flows outlined in the lease agreement.

Depreciation method for property owned:

► GAAP requires a method such as straight line depreciation over the life of the asset.

► Income Tax Basis reporting would likely be accelerated and align with the deductions taken in the tax return.

Impairment evaluations:

► Under GAAP, real estate must be evaluated for impairment on a regular basis, and it is possible to have a large write down of the asset.

► Under Income Tax Basis reporting, the real estate asset will be carried at historical cost, less depreciation, with no write down for any fair value impairments.

Based on these differences, here are some key considerations that may better help you decide on a method of choice:

What does your lending agreement or partnership agreement require? When forming a new entity or drafting agreements, negotiate your preferred method of financial reporting.

What is your exit strategy? If the company may be rolled up into a public REIT in the future, a history of GAAP financial reporting will be required.

GAAP financial statements can be affected by market fluctuations, for things such as impairment charges, which may

cause repercussions such as debt covenant violations.

Costs for reporting: It may save money to utilize the Income Tax Basis Reporting method, and only keep one set of books.

User Friendly: Which method will be easier for your investors to understand? While each method has its advantages, there is no “right” choice for reporting. Management should review the facts and circumstances of their particular situation and choose the best method for their situation.



The pieces of your company’s financial puzzle become more complex as you grow your business. Haskell & White provides the experience and leadership to fit those pieces together and help you achieve your goals.

THE VALUE OF EXPERIENCE

HASKELL & WHITE LLP
CERTIFIED PUBLIC ACCOUNTANTS AND BUSINESS ADVISORS

ORANGE COUNTY | SAN DIEGO

949.450.6200 | www.hwcpa.com



Diane Wittenberg, CPA, is a partner with Haskell & White. She works with many real estate clients as well as other industries, providing audit and consulting services to both public and private companies.

She can be reached at 949.450.6334 or dwittenberg@hwcpa.com.

WOMEN IN CRE NOMINEES



Susan Stoneburner, President
Pacific Design Directions, Inc.



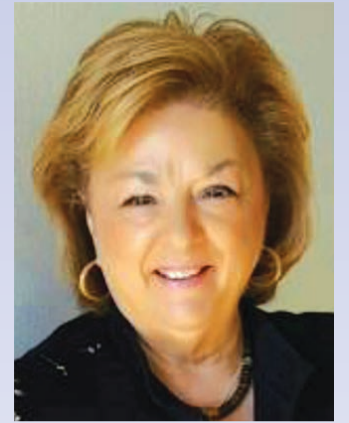
Lori Torres, Founder/CEO
Parcel Pending



Laura Archuleta, President
Jamboree Housing Corporation



Carol Springstead, President
Springstead & Associates



Elisa Stipkovich, Consultant
IHO



Adele Green, Senior Vice President/Field Specialist
Bank of America



Donna Kelly, Vice President of Community Planning
Lennar



Becky Sullivan, Vice President, Development & Construction
DJM Capital Partners, Inc.



Cheryl Osborn, President/Founder
Casco Contractors



Festival of Arts

KPRS Construction: Building the future with our clients.
KPRS congratulates the Festival of Arts on their CREW SPIRE Awards nomination.

Learn more about what we can do for you at www.kprsinc.com.





DAUM's team of experienced professionals ride in front of the pack. If you want to move faster, close more deals, keep more of what you make and have more fun doing it, then join us at the top.

From May 6 - May 10, our 2015 President's Club producers and their significant others will be celebrating together at the Fairmont Kea Lani on Maui, courtesy of DAUM.

CONGRATS TO DAUM'S 2015 PRESIDENT'S CLUB



#1 RICK JOHN
Inland Empire
DAUM #1 Top Producer



STEVE CRANE
Orange County
DAUM #2 Top Producer



CHRIS MIGLIORI
Orange County
DAUM #3 Top Producer



GUS ANDROS
Inland Empire
DAUM #4 Top Producer



MICHAEL BARREIRO
Orange County
DAUM #5 Top Producer



DAVID FREITAG
Los Angeles



JERRY SACKLER
Los Angeles



MICHAEL WALSH
Ventura County



MIKE FOXWORTHY SR.
Ventura County



CASEY MUNGO
South Bay



Mairy PANZA
Orange County



DAVID WILSON
Phoenix



GIANNI VITALE
Woodland Hills



DORAN TARKENTON
Los Angeles



CHRIS SULLIVAN
Woodland Hills



GAVIN DENNISTON
Orange County



ROBERT DIPRE
Industry



GEORGE FALES
Ventura County



ERIC BURNEY
Inland Empire



SHAN LEE
Industry



DENNIS SANDOVAL
Industry



STEVE BODEMAN
Inland Empire



ANDREW CLARK
Industry



PAUL GINGRICH
Orange County



RON BERNDT
Valencia



KEVIN TAMURA
Woodland Hills



PATTI KUTSCHKO
Valencia



BRIAN DONER
Orange County



CHARLES JOHNSON II
Industry

Ride with us. 888.659.DAUM



COMMERCIAL REAL ESTATE SERVICES

Los Angeles | San Fernando Valley | Santa Clarita Valley | San Gabriel Valley | South Bay | Mid-Counties
Orange County | Inland Empire | Ventura & Santa Barbara Counties | Phoenix, AZ

LEASING NOMINEES



Project: MicroVenton Headquarters
Nominee(s):
Savills Studley
 Jeff Cannon, Senior Managing Director



Project: Nobu at Lido Marina Village
Nominee(s):
DJM Capital Partners, Inc.
 Lindsay Parton, President
 Heather Hollister, Senior Vice President Retail Leasing
 Stenn Parton, Director of Leasing



Project: Ricoh Electronics - 1123 Warner, Tustin
Nominee(s):
Cushman & Wakefield
 Jeff Chiate, Executive Director
 Rick Ellison, Executive Director



Project: Goodwill Industries Lease, NGKF
Nominee(s):
Newmark Grubb Knight Frank
 Justin Hodgdon, Senior Managing Director
 Wesley Hunnicutt, Senior Managing Director
 Matthew Moore, Senior Managing Director
 Drew Netherton, Senior Managing Director
 Joel Smith, Associate Director

Project: Wells Fargo N.A.
Nominee(s):
ORION Property Partners, Inc.
 Jay Carnahan, President
 Ali Hawthorne, Associate
 Mark McAdams, Principal



Project: Mazda North America Operations
Nominee(s):
Cushman & Wakefield
 Chon Kantikovit, Senior Director
 Rick Kaplan, Vice Chairman
Mazda USA
 Rumi Walsh, Facilities & Administrative Manager



FOR LEASE

LAST REMAINING SPACE AT
4450 MACARTHUR BOULEVARD
 NEWPORT BEACH, CA



4,195 RSF | GROUND FLOOR

- New building adjacent to the Fairmont Hotel
- Prominent MacArthur Boulevard frontage
- Next to the Pacific Club and nearby food court
- Highly visible Newport Beach location
- Above standard ceiling height (11 feet) and abundant glassline
- Subterranean and surface parking; showers and lockers

For Leasing Information, Please Contact:
Dean Chandler
 Lic. 00833627
 +1 949 725 8515
 dean.chandler@cbre.com



Project: Jackson, DeMarco, Tidus & Peckenpaugh
Nominee(s):
ORION Property Partners, Inc.
 Jay Carnahan, Managing Partner
 Ali Hawthorne, Associate
 Mark McAdams, Principal

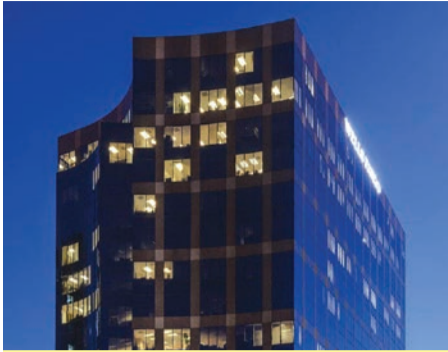


Project: Action Property Management
Nominee(s):
Corporate Realty Advisors
 Jeff Tabor, CEO/President



Project: Nations Direct Mortgage
Nominee(s):
Corporate Realty Advisors
 Jeff Tabor, CEO/President

LEASING NOMINEES



Project: i-5 Publishing, LLC
Nominee(s):
ORION Property Partners, Inc.
 Jay Carnahan, Managing Partner
 Ali Hawthorne, Associate
 Mark McAdams, Principal



Project: Bankruptcy Management Solutions
Nominee(s):
Corporate Realty Advisors
 Jeff Tabor, CEO/President



Project: LBA RV Company I LLC 5 Polaris Way, Aliso Viejo
Nominee(s):
CBRE
 Carol Trapani, 1st Vice President
 Allison Schneider, Vice President
 Rachel Pourcho, Client Services Specialist
 Jake Stickel, Senior Vice President
 Kevin Calihan, Senior Vice President



Project: Quality Systems Inc. Lakeshore Towers
Nominee(s):
CBRE
 Rick Sherburne, Executive Vice President
 Alex Hayden, Executive Vice President
 Travis Boyd, Executive Vice President



Project: Western Growers Association
Nominee(s):
Newmark Grubb Knight Frank
 Gary Allen, Senior Managing Director
Western Growers
 Tom Nassif, President/CEO



Project: Village at La Floresta
Nominee(s):
CBRE
 Barclay Harty, 1st Vice President



Project: IXI Technologies
Nominee(s):
Hughes Marino, Inc.
 Jeff Shepard, Senior Vice President
 JP Roach, Vice President



Project: Hyundai Capital America
Nominee(s):
Cushman & Wakefield
 Don Yahn, Senior Director

unparalleled

ənˌpɛrəˈleɪd / adjective

1. having no parallel or equal

synonyms: exceptional, unique, without parallel, unequalled, unprecedented, without equal, unrivaled, second-to-none, unsurpassed, incomparable



Caliber Construction Inc.
 240 North Orange Avenue | Brea CA 92821
 714-255-2700 | sales@caliberconstructioninc.com
 caliberconstructioninc.com

Caliber
 CONSTRUCTION, INC.

LENDING NOMINEES



Loan: Quintana Office Complex, Irvine, CA

Nominee(s):
New York Life Real Estate Investors
 Kirk Kniss, Senior Director
 John Lippmann, Senior Director

Hines
 Ray Lawler, Managing Director
 Drew Huffmann, Associate

HFF
 Kevin MacKenzie, Senior Managing Director
 Lee Redmond, Real Estate Analyst



Loan: Burnham San Clemente

Nominee(s):
Bank of America Merrill Lynch
 Dean Parsons, Senior Vice President
 Shane Kunimura, Client Manager
 Teresa (Teri) H. Brown, Senior Vice President
 Paul S. Kim, Vice President
 Mary Shiratori, Assistant Vice President
 Kathleen A. Medeiros, Vice President
 Margarita L. Flores, Vice President



Loan: Sares Regis Vireo at Park Place

Nominee(s):
Bank of America Merrill Lynch
 Shane Kunimura, Senior Vice President
 Annie Pedron, Senior Vice President
 Paul S. Kim, Vice President
 Marilyn R. Smith, Vice President
 Margarita L. Flores, Vice President



Loan: Lincoln Ave Apartments

Nominee(s):
Bank of America Merrill Lynch
 Maria Joyce, Senior Vice President
 Stephanie Oliveras, Senior Vice President
 Ileana Elmasyan, Assistant Vice President
 Eva Salcedo, Vice President
 Casey M. Carpenter, Vice President

Loan: Bella Terra

Nominee(s):
Prudential Real Estate Investors
 Nevena Vujic, Vice President



Loan: Sendero Marketplace Loan

Nominee(s):
MUFG Union Bank
 Brian Brown, Vice President



CONGRATULATIONS SPIRE AWARD NOMINEES

CRAIG REALTY GROUP
 craigrealtygroup.com

EMPOWERING WOMEN IN COMMERCIAL REAL ESTATE FOR 30 YEARS

CITADEL OUTLETS
 LA'S CHOICE FOR OUTLET SHOPPING

OUTLETS at San Clemente
 OPENING FALL 2015



OUR 2015 TOP PRODUCERS.

Newmark Grubb Knight Frank would like to recognize our Top Producers in Orange County.

TOP PRODUCER



Wes Hunnicutt



Gary Allen



Robert Griffith



Justin Hodgdon



Garth Hogan



Doug Mathews



Jack McNutt



Matt Moore



Drew Netherton



Scott Read



John Scruggs



Steve Sprenger

**Newmark Grubb
Knight Frank**

For further information, please contact:
Greg May, Executive Vice President, Regional Managing Director
4675 MacArthur Court, Suite 1600, Newport Beach, CA 92660 • 949.680.2000

NEW CONSTRUCTION NOMINEES



Project: Mount of Olives Children's Ministry Building
Nominee(s):
Mount of Olives Church
 Dave Scott, Manager
Erickson Hall Construction, Inc.
 Jim Fisher, Project Manager



Project: Crean Lutheran High School Athletic Complex
Nominee(s):
Crean Lutheran High School
 Brian Underwood, Executive Director
Terrain Integration, Inc.
 Stephanie Shermoen, President/
 Landscape Architect
Mark Bogh Contractor
 Mark Bogh, President



Project: Courtyard Anaheim Theme Park Entrance
Nominee(s):
R.D. Olson Construction
 Joseph Cervantes, Senior Vice President of Operations
 Steve Toal, Project Manager
 Brian Knight, Project Engineer



Project: Apex Laguna Niguel
Nominee(s):
Mill Creek Residential
 Samuel Simone, Senior Managing Director



Project: Centerpointe Apartment Homes
Nominee(s):
Irvine Company Apartment Communities
 JD Shafer, Senior Director, Community Management



Project: Boardwalk by Windsor
Nominee(s):
TCA Architects
 Melissa Logan, Director of Marketing



Project: Outlets at San Clemente
Nominee(s):
Craig Realty Group
 Steve Craig, CEO



Project: Pacific City
Nominee(s):
DJM Capital Partners, Inc.
 Becky Sullivan, Vice President, Construction & Development

Relax,
we've got you
and your parking lot
covered.

UNITED PAVING CO.
 Asphalt - Concrete - Striping
 Tel 714-739-2200
 INFO@UNITED-PAVING.COM Lic. 865828

NEW CONSTRUCTION NOMINEES



Project: 200 Spectrum Center Drive
Nominee(s):

Irvine Company

- Roger DeWames, Vice President, Development
- Churchil Bunn, Director Development
- Tim Carey, Vice President Project/Construction Management
- Jeffrey Shaw, Senior Director Leasing
- Holly McManus, Vice President Operations
- Kandy DeYoung, Director, Operations
- Ashley Trexler, Manager, Operations
- Rick Christensen, Senior Chief Engineer
- Jeff Perkins, Chief Engineer
- Jason Knudson, Senior Director/Project Manager

BCM Consulting

David Byrd, Principal

Pei Cobb Freed

- Michael Bischoff, AIA, LEED Architect
- Michael Lyon, Architect

LPA Architects

Denise Mendelssohn, Architect/Project Manager

Hathaway Dinwiddie

- John Cowles, Vice President
- Eric Matthews, Superintendent
- Jose Iniguez, Senior Project Manager

Burton Landscape Architecture Studio

- Bill Burton, President
- Roger Wilcox, Project Manager
- Matthew MacLeod, Superintendent

Project: Marina Park
Nominee(s):
KPRS Construction Services, Inc.

Bob Berenguer,
 Senior Project Manager

City of Newport Beach

Dave Webb, Public Works
 Director

Rabben Herman Design

Dan Herman, Principal
 Tom Jewell, Lead Architect

Bundy-Finkel Architects

Timothy Bundy, Principal
 Richard Finkel, Principal
 Mike Weyrich, Lead
 Architect



Project: The Patio Café at Airport Tower
Nominee(s):

The Muller Company

Meghan Froeberg, Property Manager
 Jenny Blanchart, Director of Property
 Management

Sue Donahugh, Director of Tenant &
 Capital Improvements

Jim Bannan, Director of Leasing &
 Marketing

Rich Fragapane, Vice President
 Development & Construction

K2 General Contractors, Inc.

Kris Thordarson, President

CDL Associates, Inc.

Carolyn Doyle, President

H.Hendy Associates

Monica Walker, CID LEED AP ID+C

Nadel Architects

David Jacobson, Executive Vice
 President/Project Director



Western Digital
 DRIVE Wellness Center

COASTAL PACIFIC
 CONSTRUCTION

28 Edelman, Irvine, CA 92618
 (949) 770-1555

www.coastalpacificonstruction.com

SPIRE Award Nominee
 Best Tenant Improvement

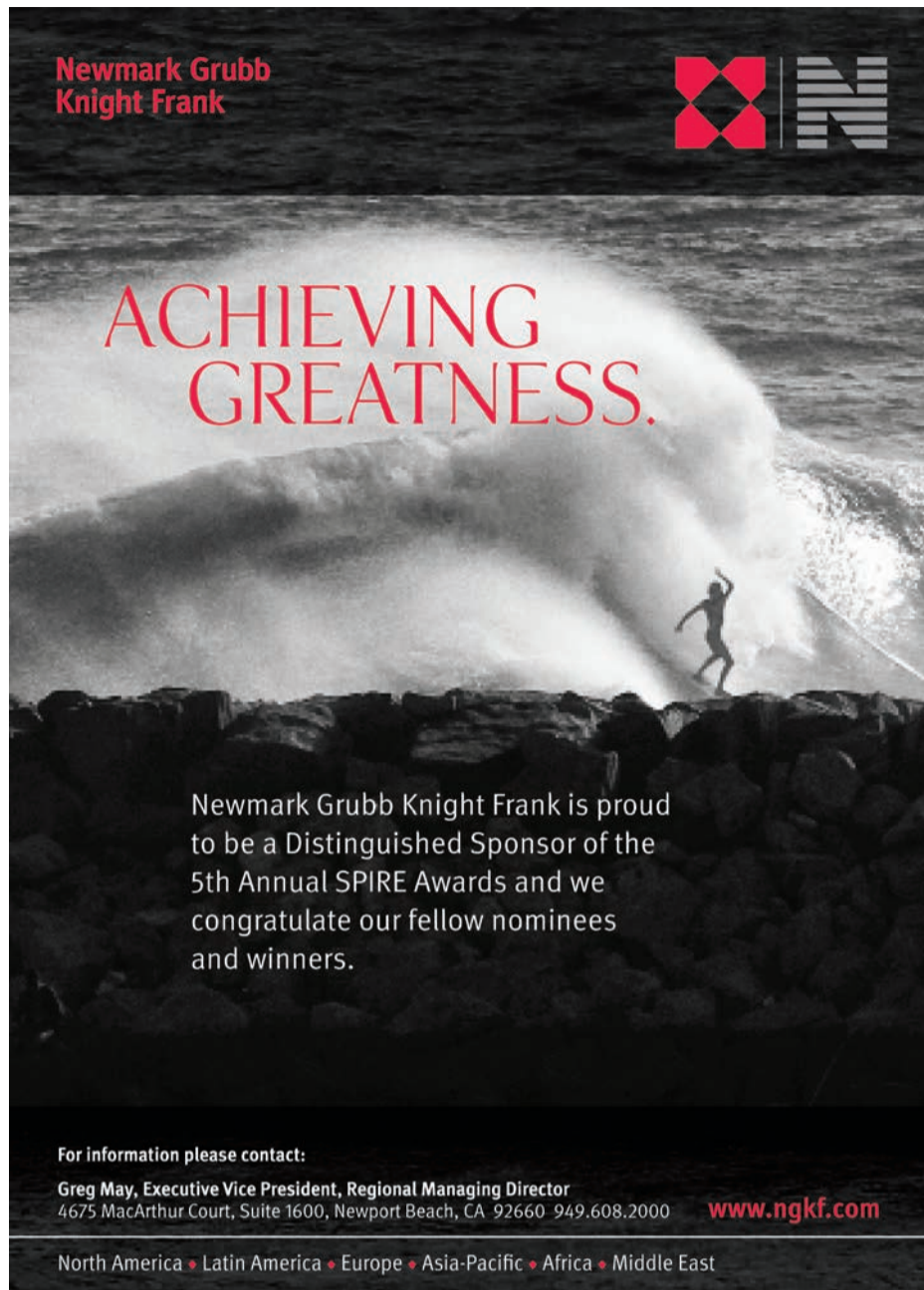
TEN-X CONGRATULATES
 THE SPIRE AWARD
 WINNERS AND NOMINEES



Learn more at ten-x.com



Unmatched Access | Deeper Insight | Superior Execution



Newmark Grubb Knight Frank

ACHIEVING GREATNESS.

Newmark Grubb Knight Frank is proud to be a Distinguished Sponsor of the 5th Annual SPIRE Awards and we congratulate our fellow nominees and winners.

For information please contact:
Greg May, Executive Vice President, Regional Managing Director
 4675 MacArthur Court, Suite 1600, Newport Beach, CA 92660 949.608.2000 www.ngkf.com

North America • Latin America • Europe • Asia-Pacific • Africa • Middle East

TENANT IMPROVEMENT NOMINEES



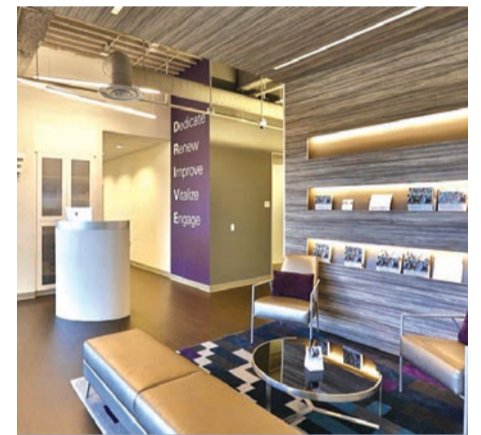
Project: MemorialCare Health System
Nominee(s):
MemorialCare Health System
 Tammie McMann Brailsford,
 Chief Operating Officer



Project: Ola Mexican Kitchen
Nominee(s):
Ola Mexican Kitchen
 Anthony Andrews, Owner



Project: Asics North American Headquarters
Nominee(s):
Dennis Potts Project Management
 Dennis Potts, President



Project: DRIVE Wellness Center at Western Digital
Nominee(s):
Coastal Pacific Construction, Inc.
 Gary Mason, CEO/President
 Kevin Eddy, Director of Project Management



First we listen — then we deliver.

Thank you, Too Faced Cosmetics.

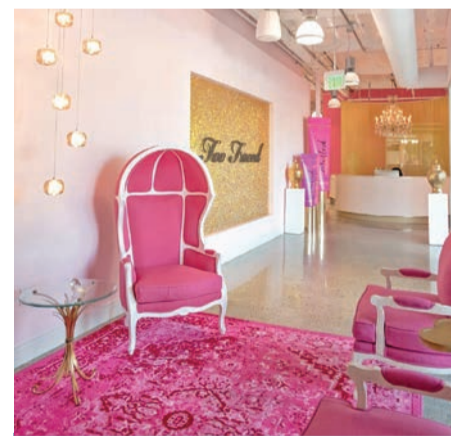
Thank you, Bixby Land Company.

Thank you, CREW.

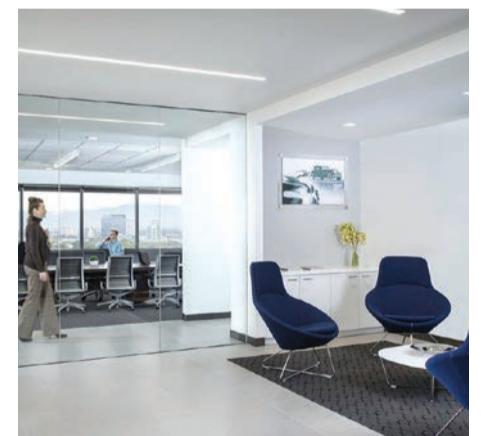
OUR SPIRE nomination for interiors reflects Too Faced's vision and Bixby's great project as much as our construction.




101 Shipyard Way, Suite A | Newport Beach, CA 92663
 949-723-0147 | www.dbacinc.com | Lic #637651



Project: Too Faced Cosmetics at gen2
Nominee(s):
Bixby Land Company
Gensler
 Kim Graham, Principal, Managing Director
 Kirstie Acevedo, Senior Associate
DBaC
 John Curci, President
Too Faced Cosmetics
 Jerrod Blandino, Co-Founder/Creative Director
 Jeremy Johnson, Co-Founder/CEO



Project: Fiat Chrysler Automobiles
Nominee(s):
Ware Malcomb
 Ted Heisler, Principal, Interior Architecture and Design
Fiat Chrysler Automobiles
 Jeff Eschenbach, Director – California BC
CBRE
 Craig Pierson, Senior Project Manager
DTZ
 Anya Ostry, Broker
Servco Builders
 Chris Webb, President
American Interiors
 Chris Froling, Furniture Vendor

TENANT IMPROVEMENT NOMINEES



Project: Ritz Prime Seafood
Nominee(s):
Grill Concepts
 Mike Weinstock, Founder



Project: Cox Castle Park Place Office
Nominee(s):
Cox Castle Nicholson, LLP
 Dave Wensley, Partner
Turelk, Inc.
 Michael, Paselk, Executive Vice President
Source Creative Office Interiors
 Mike Manser, President



Project: Brookfield Residential
Nominee(s):
Gensler
 Sandi Warneke, Principal
 Dianne Dodge, Project Manager
 MinhHa Nguyen, Job Captain
 Hannah Zalusky, Designer
Brookfield Residential
 Adrian Foley, Chief Operating Officer



Project: Opus Bank, "Bank of the Future"
Nominee(s):
Gensler
 James Young, Design Director
 Lindsay Green, Project Manager
 Alison Wineland, Interior Designer
Opus Bank
 Mark Gordon, Senior Vice President
Turelk, Inc.
 Mike Paselk, President

Project: KBS Realty
Nominee(s):
Casco Contractors
 Cheryl Osborn, President/CEO
 Tim Imber, Director of Construction



Project: MemorialCare Medical Foundation
Nominee(s):
KPRS Construction Services, Inc.
 Peter Livermore, Senior Project Manager
LPA, Inc.
 Maria Louie, Senior Project Manager
 Amy Dicosola, Design Coordinator
 Brenda O'Bryan, Interior Designer
MemorialCare Medical Foundation
 Jim Kobiashi, Project Manager
 John Somers, Construction Coordinator



Specialty Deposit Services

With financial strength and industry experience, we provide expert banking services to handle the most urgent and technical banking requirements of court appointed fiduciaries nationwide:

- Liquidating Trustee
- State & Federal Court Receivers
- Restructuring Professionals
- Chief Responsible Officers
- Disbursing Agents
- Professional Asset Management Fiduciaries
- Chapter 11 & Chapter 7 Trustees
- Attorney Referred Debtor's in Possession

For more information, contact SDS@eastwestbank.com



eastwestbank.com

Equal Housing Lender Member FDIC

TENANT IMPROVEMENT NOMINEES



Project: Sub-Zero / Wolf Showroom
Nominee(s):
Driver SPG
 Karl Kreutziger, President
Zingg Design
 Mark Zingg, President/CEO



Project: Mark IV Capital
Nominee(s):
H. Hendy Associates
 Todd Shumaker, Senior Designer
Mark IV
 Paul Cate, CEO/President
Driver SPG
 Michael Harness, Senior Project Manager



Project: IXI Technology
Nominee(s):
Trendzitions
 Chris Tooker, President/CEO

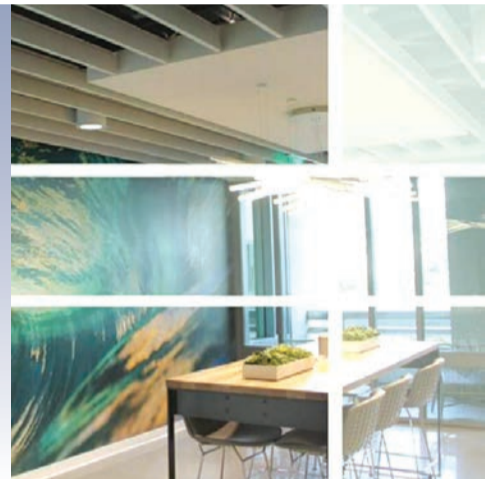


Project: Hueston Hennigan LLP
Nominee(s):
SAA
 Steven Drucker, Design Principal

Project: Tony Pepperoni
Nominee(s):
Marquis Construction, Inc.
 David James, Director of Construction



Project: Lennar Multifamily Communities
Nominee(s):
Pacific Tusk Builders
 David Goldberg, Project Manager/President
Transwestern
 Travis Slunaker, Construction Manager
 Penny Boeck, Portfolio Manager
CDL Associates, Inc.
 Carolyn Doyle, President
Gensler
 Matt Gammel, Senior Associate
Lennar Multifamily
 Gary Pugh, Design Manager



A FULLY INTEGRATED REAL ESTATE COMPANY PROVIDING ALTERNATIVE INVESTMENTS SINCE 1998



PROUD SPONSOR OF THE 5TH ANNUAL SPIRE AWARDS



2050 MAIN STREET, SUITE 650 | IRVINE, CA 92614 | P: 949.442.1000 | WWW.PASSCO.COM
 IRVINE, CA | DENVER, CO | AUSTIN, TX | DALLAS, TX | ATLANTA, GA



MemorialCare Medical Center, San Juan Capistrano

KPRS Construction: Building the future with our clients. KPRS Congratulates MemorialCare Medical Center on their CREW SPIRE Awards Nomination.

Learn what we can do for you at www.kprsinc.com.

License No. 751130

www.kprsinc.com



PHILANTHROPY NOMINEES



Nominee(s): Sean Chaffins, Vice President Banc of California Philanthropic Involvement: Boys & Girls Club of Fullerton Fullerton Rotary Fullerton Cares Autism Foundation Tustin Public School Foundation Big Brothers & Big Sisters Foundation



Nominee(s): Chip Williams, Principal Gensler Philanthropic Involvement: Leukemia & Lymphoma Society (LLS) Board Member Seabreeze Church, Youth Ministry



Nominee(s): Jason Rich, Vice President Snyder Langston Philanthropic Involvement: B.R.I.D.G.E.



Nominee(s): Grant Freeman, Principal Freeman Realty Company, Inc. Philanthropic Involvement: American Cancer Society



Nominee(s): Chris Taylor, Vice President Division Leader Southland Industries Philanthropic Involvement: CHOC American Heart Association



Nominee(s): Adele Green, Senior Vice President, Small Business Banking Bank of America Philanthropic Involvement: Project Access SCORE Community service at CHOC with Blu, her licensed therapy dog LEAD (Leadership, Education, Advocacy and Development)



Nominee(s): Mark and Jan Hilbert, Owner/President Hilbert Properties Philanthropic Involvement: Chapman University



Nominee(s): The PIMCO Foundation Douglas Hodge, CEO/President Philanthropic Involvement: Share the Harvest Event in Newport Beach Emerging Enterprise Program (EEP) "Global Week of Volunteering"



Nominee(s): Hoag Memorial Hospital Presbyterian - Real Estate, Facilities, Construction, and Operations (REFCO) Karen Torres, Director, Real Estate Gwyn Parry, M.D., Director Community Health and Community Benefit Program Robert Braithwaite, President/CEO Philanthropic Involvement: Providence Speech and Hearing Center Linda Smith, CEO

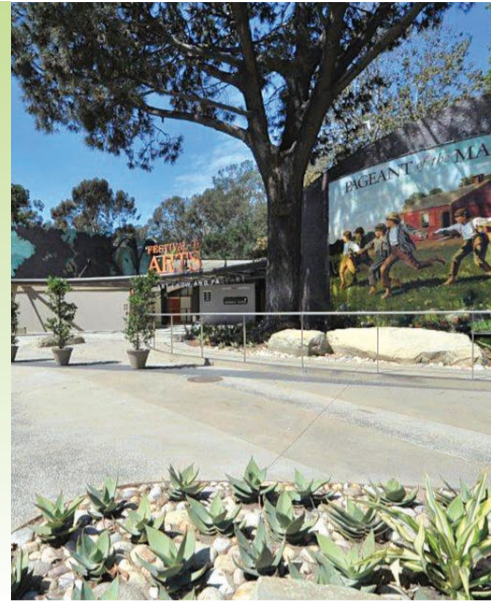
Willis Towers Watson logo and tagline 'See risk as a path to growth'. A large white box contains the text 'We are proud to support the SPIRE award nominees'. The background is a high-angle view of a modern office building atrium.

BUILDING RENOVATIONS NOMINEES

Project: 2020 Main Building Renovation
Nominee(s):
Pacific Design Directions, Inc.
 Susan Stoneburner, President
 Matt Agle, Division Manager
 Glenn Pillsbury, Superintendent
Cushman & Wakefield
 Scott Sheridan, Senior Project Director
Gensler & Associates
 Steve Butler, Associate



Project: Festival of Arts
Nominee(s):
KPRS Construction Services, Inc.
 Vince Bakulich, Senior Project Manager
 Doug Hood, Superintendent
 Adam Moler, Project Engineer
Festival of Arts
 Fred Sattler, Board President
Bauer Architects
 Jay Bauer, Principal
 Greg Tate, Project Architect



Project: The VineOC
Nominee(s):
Irvine Company
 Tom Greubel, Regional Vice President, Leasing
 Jeff Shaw, Senior Director, Leasing
 John Koga, Vice President, Planning & Design
 Imelda Delherra, Senior Director, Construction
 Lauren Kelly, Senior Vice President, Marketing, Office Properties
 Kristin Jenkin, Director, Interior Architecture
 Jessica Tracy, Manager, Construction
 Rossi Coyle, Senior Manager, Operations
 Mike Major, Vice President, Landscape Architecture



Project: Avalon
Nominee(s):
Bixby Land Company



Project: Lyon Living
Nominee(s):
SAA
 Rick Shlemmer, Principal

INNOVATIVE WORKSPACES




BIXBY
LAND COMPANY
EST 1896

bixbyland.com

CONGRATULATIONS TO ALL AWARD WINNERS

PARK PLACE

PARKPLACEIRVINE.COM



LBA
REALTY

BUILDING RENOVATIONS NOMINEES

Project: Harbor Distributing
Nominee(s):
Gensler
 James Young, Design Director
 Anne Bretana, Project Manager
 Mark McManus, Associate
 Jaimelynn Shah, Senior Associate
Harbor Distributing
 Tommy Reyes, President
ARCO National Construction Company, Inc.
 Tom Strickland, President



Project: Confidential Technology Firm
Nominee(s):
Confidential Technology Firm
 Jerry Kingkade, Vice President of Sales
Gensler
 Dianne Dodge, Senior Associate
 David Loyola, Principal
Howard Building Corporation
 Pete Cali, Project Superintendent
CBRE
 Travis Boyd, Executive Vice President
LBA
 Eric Brown, Director of Leasing & Development



Project: Smart Circle International
Nominee(s):
SAA
 Rick Shlemmer, Principal



Project: 33.7 North
Nominee(s):
Bixby Land Company



Project: The Michelle Building
Nominee(s):
Kelemen Caamano Investments
 Tibor Kelemenm President



Project: Newport Gateway Revitalization
Nominee(s):
The Irvine Company
 Kristin Jenkin, Director of Interior Architecture
Gensler
 Paul Morford, Associate
Whiting-Turner
 Jeff Chang
Systems Source
 Brooke Deutz



www.JUSTIMAGINEIDAHO.COM

Find 15552 Hwy 20-26, Caldwell, ID on Loopnet.com

LIGHT INDUSTRIAL SITE

Amazing Opportunity in Canyon County, Idaho! 24.328 acres, 2 parcels, zoned M-1. Existing shop with separate finished area, meeting rooms, his/hers restrooms & kitchen. Dual zoned heating and A/C. Easy freeway access, within 25 minutes of the Boise Airport. City sewer and water have been pulled to the site. Two 8-inch Sewer stubs sit 400' and 800' of the SW corner of the property. Water Main brought along southern boundary from SW to SE Corners.

<http://silverhawkrealty.com/commercial-listings/>

- 24.33 +/- ACRES | ONLY \$1.23/SQ. FT.
- **LOW TAXES!**
- STATE TAX INCENTIVES AVAILABLE
- NEW CITY SEWER & WATER TO PROPERTY
- WORKFORCE TRAINING AVAILABLE
- IRRIGATION AVAILABLE



TRACY KASPER
 Broker, Owner
 208.867.2709
tracy@justIMAGINEidaho.com

TODD MOFFIS
 REALTOR®
 208.250.0567
tmoffis@silverhawkrealty.com

CALL NOW!

Office: 2805 Blaine St., Ste. 200
 Caldwell, ID 83605
 Website: www.silverhawkrealty.com

You inSPIRE Us.



Congratulations to all of the SPIRE Awards winners and nominees. We celebrate your accomplishments and commitment to superior performance in real estate.

IRVINE COMPANY

To find out more about our properties, visit IrvineCompanyOffice.com or call 949.720.2550

SALES NOMINEES



Project: MetroCenter at South Coast
Nominee(s):
McCarthy Cook
 Tom McCarthy, Principal
 Ed Cook, Principal



Project: Santa Ana Apartment Portfolio
Nominee(s):
Sperry Van Ness/M.J.M. And Associates, Inc.
 Mark Mimms, Managing Director



Project: Imperial Distribution Center
Nominee(s):
Cushman & Wakefield
 Jeff Chiate, Executive Director
 Rick Ellison, Executive Director



Project: 3800-3810 E. Coast Hwy, Corona Del Mar
Nominee(s):
Newmark Grubb Knight Frank
 Ian Brown, Managing Director



Project: 8925 Orangethorpe
Nominee(s):
Colliers International
 Clyde Stauff, Senior Executive Vice President
 Bret Hardy, Managing Director
Chaparral Land Company
 Graham Weiss, Principal

Project: Archstone Yorba Linda
Nominee(s):
Moran & Company
 Tom Moran, Partner



Project: 5701 Skylab, Huntington Beach
Nominee(s):
Cushman & Wakefield
 Jeff Chiate, Executive Director
 Rick Ellison, Executive Director
 Randy Ellison, Associate Director
 Kyle McGillen, Associate

ORANGE COUNTY BUSINESS JOURNAL
The Community of Business.

TOP REAL ESTATE DEALS SPECIAL REPORT

SHOW OFF YOUR BIGGEST DEALS OF 2015!

Publication Date	Ad Materials
March 14, 2016	March 7, 2016
Space Reservations	The List
March 4, 2016	Title Companies

For more information, contact Sheldon Ascher at 949.833.8373 x 217 or ascher@ocbj.com.

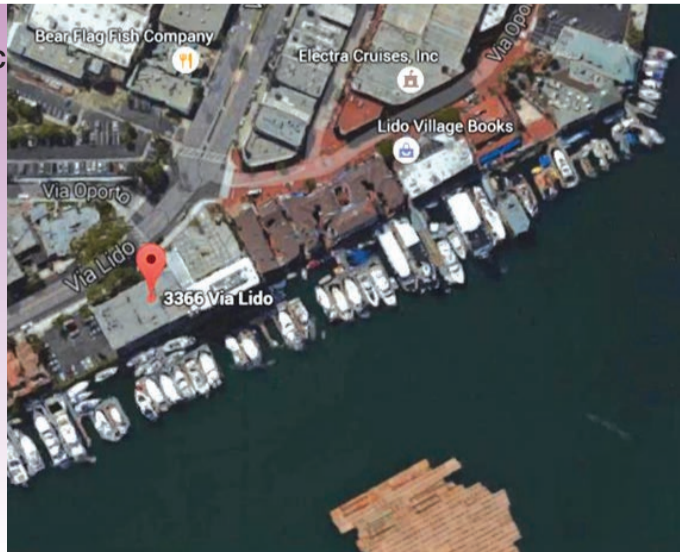


Project: Parker - Summit VII 35 Enterprise, Aliso Viejo
Nominee(s):
CBRE
 Carol Trapani, 1st Vice President
 Allison Schneider, Vice President
 Ted Snell, Senior Vice President
 Jake Stickel, Senior Vice President
 Eric Snell, Associate
 Linda McCord, Client Services Specialist



Project: CF II Buena Park Mall LLC
Nominee(s):
CBRE
 Phil Voorhees, Senior Vice President
 Kirk Brummer, Director
 Preston Fetrow, Senior Vice President
 Todd Goodman, Executive Vice President
 John Read, 1st Vice President
 Matthew Burson, Finance Director
 Megan Wood, 1st Vice President
 Walter Pagel, Sr. Vice President
 Daniel Samulski, Senior Vice President

Project: Burnham-Ward Properties LLC
Nominee(s):
Burnham USA
 Scott Burnham, CEO



SALES NOMINEES



Project: HFF Orange County Office Investment Sales Foothill Plaza

Nominee(s):
HFF

Ryan Gallagher, Senior Managing Director
Mike McCann, Managing Director
Derreck Barker, Associate Director



Project: GP's Landing

Nominee(s):

Khoshbin Company, Inc.
Manny Khoshbin, Principal

Project: AT&T Anaheim Campus

Nominee(s):

Cushman & Wakefield

Jeff Chiate, Executive Director
Rick Ellison, Executive Director
Randy Ellison, Associate Director



Project: HFF Orange County Office Investment Sales - 1301 Dove

Nominee(s):

HFF

Ryan Gallagher, Senior Managing Director
Mike McCann, Managing Director
Derreck Barker, Associate Director

Project: HFF Orange County Office Investment Sales - Quintana

Nominee(s):

HFF

Ryan Gallagher, Senior Managing Director
Mike McCann, Managing Director
Derreck Barker, Associate Director

Project: HFF Orange County Office Investment Sales - 5000 Birch

Nominee(s):

HFF

Ryan Gallagher, Senior Managing Director
Mike McCann, Managing Director
Derreck Barker, Associate Director

Project: HFF Orange County Office Investment Sales - 18201 Von Karman

Nominee(s):

HFF

Ryan Gallagher, Senior Managing Director
Mike McCann, Managing Director
Derreck Barker, Associate Director



"No law firm does more real estate finance than Sheppard Mullin."
Find out why.

No firm does more real estate finance legal work for major institutional lenders than Sheppard Mullin. Our clients are the best of the best in real estate finance, including top financial institutions, major banks and more.

How can we help you? Contact Partner Dean Demetre at ddemetre@sheppardmullin.com or 714.513.5100.

SheppardMullin

www.sheppardmullin.com | www.bankruptcyblog.com

Beijing | Brussels | Century City | Chicago | London | Los Angeles | New York | Orange County | Palo Alto
San Diego (Downtown) | San Diego (Del Mar) | San Francisco | Seoul | Shanghai | Washington, D.C.

DWB

DON WILSON BUILDERS

Celebrating 60 years of excellence in real estate!

Congratulates the 2016
Spire Award Recipients



Mark your calendars for these 2016 CREW-OC Events!

Date	Event	Location
March 10	CREW-OC SPIRE Awards	Center Club
April 19	Luncheon / Panel Discussion	Pacific Club
May 10	Luncheon / Panel Discussion	Pacific Club
June 16-17	2016 CREW Network Spring Leadership Summit	Detroit, MI
July 19	Luncheon / Panel Discussion	Pacific Club
August	Annual Summer Party	TBA
September 20	Luncheon / Panel Discussion	Pacific Club
October 19	2016 CREW Network Fall Leadership Summit - prior to convention	New York, NY
October 19-22	2016 CREW Network Convention & Marketplace	New York, NY
October	Annual Mixer	TBA
November 8	Luncheon / Panel Discussion	Pacific Club

2016 Annual Sponsors

Platinum **Brower** MILLER + COLE **CapitalOne** EAST WEST BANK ORANGE COUNTY BUSINESS JOURNAL

Gold **BEHR** | **KILZ** **BLACKROCK** **Duke REALTY** **els** CERTIFIED PUBLIC ACCOUNTANTS & BUSINESS ADVISORS **NELSON PAVING** NPG INC. ASPHALT SERVICES Since 1941 Your Assurance of Quality & SEALING **RUTAN** RUTAN & TUCKER, LLP **SAUNDERS** COMMERCIAL SEISMIC RETROFIT **squarmilner** **TROUTMAN SANDERS** **UNITED PAVING CO.** "When Integrity Counts"

- Silver Craig Realty Group | Greenlaw Management | Langan | PM Realty Group | Sunwest Bank | Ware Malcomb
- Bronze Parking Concepts, Inc.
- Affiliate Able Services | American Technologies, Inc. | Har-Bro | Humanscale | Painting Unlimited, Inc. | Pivot Interiors
- Friend Advantage Painting Solutions | Hollister

